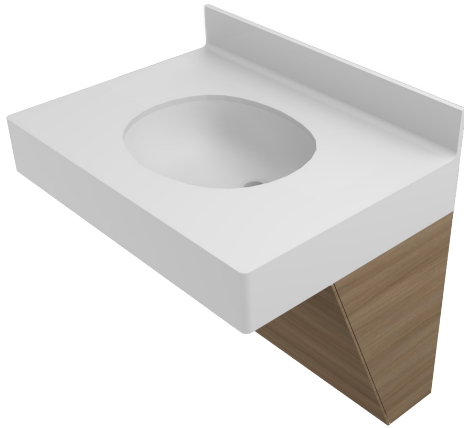


FUTRUS® ELIPTA HYBRID SINK MODULE

SPECIFICATION SHEET

FUTRUS
SOLUTIONS WITH CORIAN® DESIGN

designed with
CORIAN
SOLID SURFACE



STANDARD FEATURES

- Sink and counter made with 100% Corian®
- Standard or offset drain location
- Optional overflow integration
- Corian® resists scratching, staining, chipping & impacts
- Corian® is seamless & nonporous
- Corian® is bleach cleanable
- ADA compliant
- Corian® is GREENGUARD certified to resist mold and bacteria growth

MODULE DETAILS

- Overall Unit Size: 30" W x 21" D x 34" H
- Features the Elipta F1613 sink: 16" W x 13" D x 4-11/16" Deep
- 7" front apron
- Eased edges typical
- Square outside corner with 1/2" radius or 4" radius outside corner
- 4" coved Corian® backsplash
- Laminate or thermofoil base
- Matching plumbing access panel with security screws
- Available as fully enclosed for spaces requiring tamper resistance

STANDARD CORIAN® COLORS

- _00 Glacier White
- _01 Cameo White
- _02 Bisque
- _03 Bone
- _04 Vanilla
- _11 Linen

BASE COLORS

- _LC Laminate Cherry
- _LM Laminate Maple
- _LW Laminate Walnut
- _TC Thermofoil Cherry
- _TM Thermofoil Maple
- _TW Thermofoil Walnut

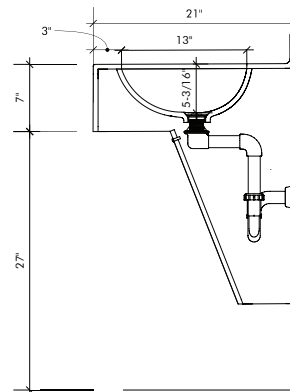
Additional colors available, contact Futrus®

SPECIFICATION NO.

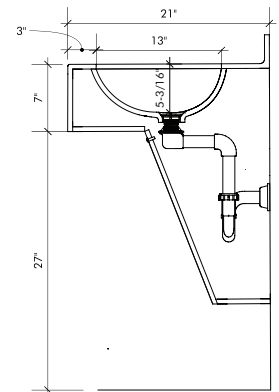
DESCRIPTION

- | | |
|---|--|
| FHSM1613_AP_FR_[CORIAN COLOR]_[BASE COLOR] | Futrus Elipta Sink Module with laminate or thermofoil access panel; finished right end |
| FHSM1613_AP_FL_[CORIAN COLOR]_[BASE COLOR] | Futrus Elipta Sink Module with laminate or thermofoil access panel; finished left end |
| FHSM1613_AP_FBE_[CORIAN COLOR]_[BASE COLOR] | Futrus Elipta Sink Module with laminate or thermofoil access panel; finished both ends |

*Add _ENC to end of specification for fully enclosed base ideal for behavioral health applications



TYPICAL ADA LAYOUT



TYPICAL ADA LAYOUT TAMPER RESISTANT/FULLY ENCLOSED

OFFSET STRAINER ASSEMBLY & FULLY ROTATIONAL P-TRAP REQUIRED

futrus.com
info@futrus.com
1.877.FUTRUS1 (388.7871)