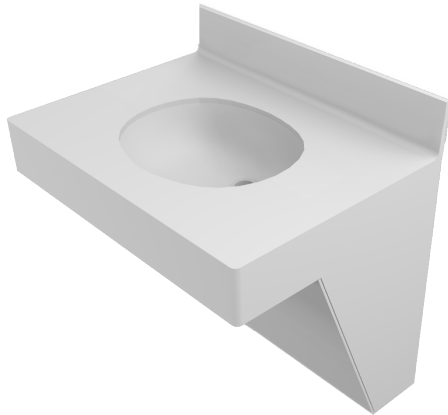


FUTRUS® ELIPTA SINK MODULE

SPECIFICATION SHEET

FUTRUS
SOLUTIONS WITH CORIAN® DESIGN

designed with
CORIAN
SOLID SURFACE



STANDARD FEATURES

- Made with 100% Corian®
- Standard or offset drain location
- Optional overflow integration
- Resists scratching, staining, chipping & impacts
- Seamless & nonporous
- Bleach cleanable
- ADA compliant
- Corian® is GREENGUARD certified to resist mold and bacteria growth

MODULE DETAILS

- Overall Unit Size: 30" W x 21" D x 34" H
- Features the Elipta F1613 sink
16" W x 13" D x 4-11/16" Deep
- 7" front apron
- Eased edges typical
- Square outside corner with 1/2" radius or 4" radius outside corner
- 4" coved backsplash
- Corian® plumbing access panel with security screws
- Available as fully enclosed for spaces requiring tamper resistance

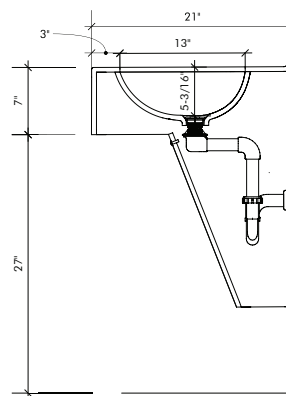
STANDARD COLOR OFFERINGS

- _00 Glacier White
- _01 Cameo White
- _02 Bisque
- _03 Bone
- _04 Vanilla
- _11 Linen

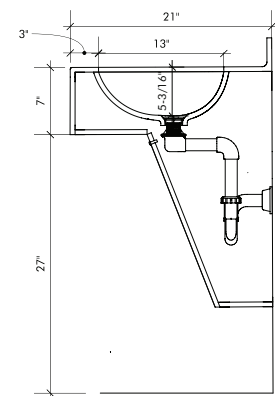
Additional colors available, contact Futrus®

SPECIFICATION NO.	DESCRIPTION
FSM1613_AP_FR_[COLOR]	Futrus Elipta Sink Module with access panel; finished right end
FSM1613_AP_FL_[COLOR]	Futrus Elipta Sink Module with access panel; finished left end
FSM1613_AP_FBE_[COLOR]	Futrus Elipta Sink Module with access panel; finished both ends

*Add _ENC to end of specification for fully enclosed base ideal for behavioral health applications



TYPICAL ADA LAYOUT



TYPICAL ADA LAYOUT TAMPER RESISTANT/FULLY ENCLOSED

OFFSET STRAINER ASSEMBLY & FULLY ROTATIONAL P-TRAP REQUIRED

futrus.com
info@futrus.com
1.877.FUTRUS1 (388.7871)