



FUTRUS<sup>®</sup> AQUAGUARD TROUGH SINKS

designed with

CORIAN<sup>®</sup>  
SOLID SURFACE

# FUTRUS® AQUAGUARD TROUGH SINKS



The Futrus® Aquaguard Trough Sink and Module features a seamlessly integrated sink and countertop, made from 100% Corian®. The graduated basin slope directs water away to reduce splashing. The basin is self-draining and countertop areas can be minimized to prevent water pooling. Non-porous, bleach cleanable Corian® surfaces are highly durable and resist mold and bacteria growth for greater hygiene. The floating design provides a modern, streamlined look and enables easy maintenance.

Modules include a tamperproof plumbing enclosure panel that is specifiable in Corian® or laminate and is removable for easy maintenance. ADA compliant and ideal for commercial or healthcare environments.

- Made with 100% Corian®
- ADA compliant
- Self-draining sloped basin
- Bleach cleanable
- Resists scratching, staining, chipping & impacts
- Corian® is GREENGUARD certified to resist mold & bacteria growth
- Seamless & nonporous
- Easy installation & maintenance

## STANDARD AQUAGUARD TROUGH SINK FEATURES

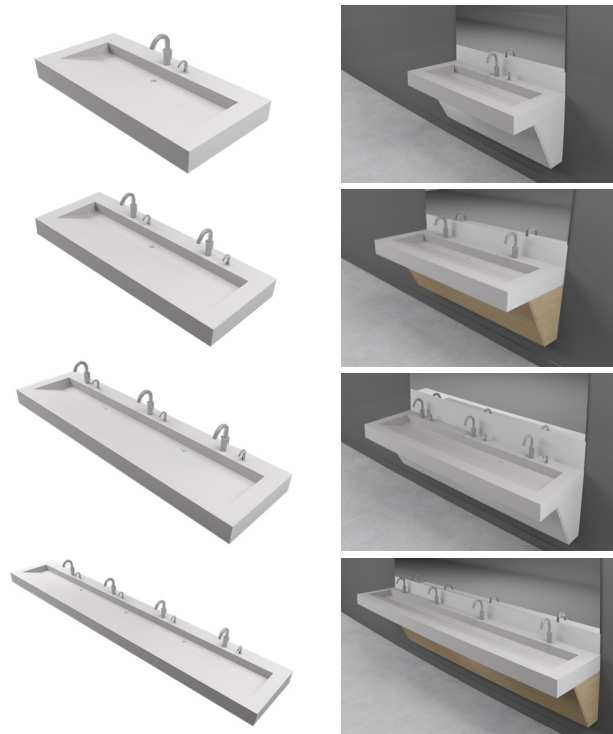
- 1-Station, 2-Station, 3-Station & 4-Station options
- Widths: 5', 6', 7', 8', 9', 10', 11'
- Depths: 22" to 24"
- Apron: 5" tall
- Basin Size: 14" W x 5" D; 22° slope
- Ends: Finished or Unfinished
- 4" detached backsplash
- Faucet and drain cut-outs
- Colors: Cameo White, Glacier White, Bone, Bisque, Vanilla, Sandstone, Linen
- 1 year warranty; Corian® 10 year limited warranty

## STANDARD AQUAGUARD MODULE FEATURES

- Height: 34" overall
- Base: Corian® or Laminate
- Corian® Colors: Cameo White, Glacier White, Bone, Bisque, Vanilla, Sandstone, Linen
- Laminate Colors: Cherry, Maple or Walnut

## CUSTOMIZATIONS

- Available in all Corian® colors and patterns
- Custom sizes available
- Aprons: Additional sizes available
- Cove splash



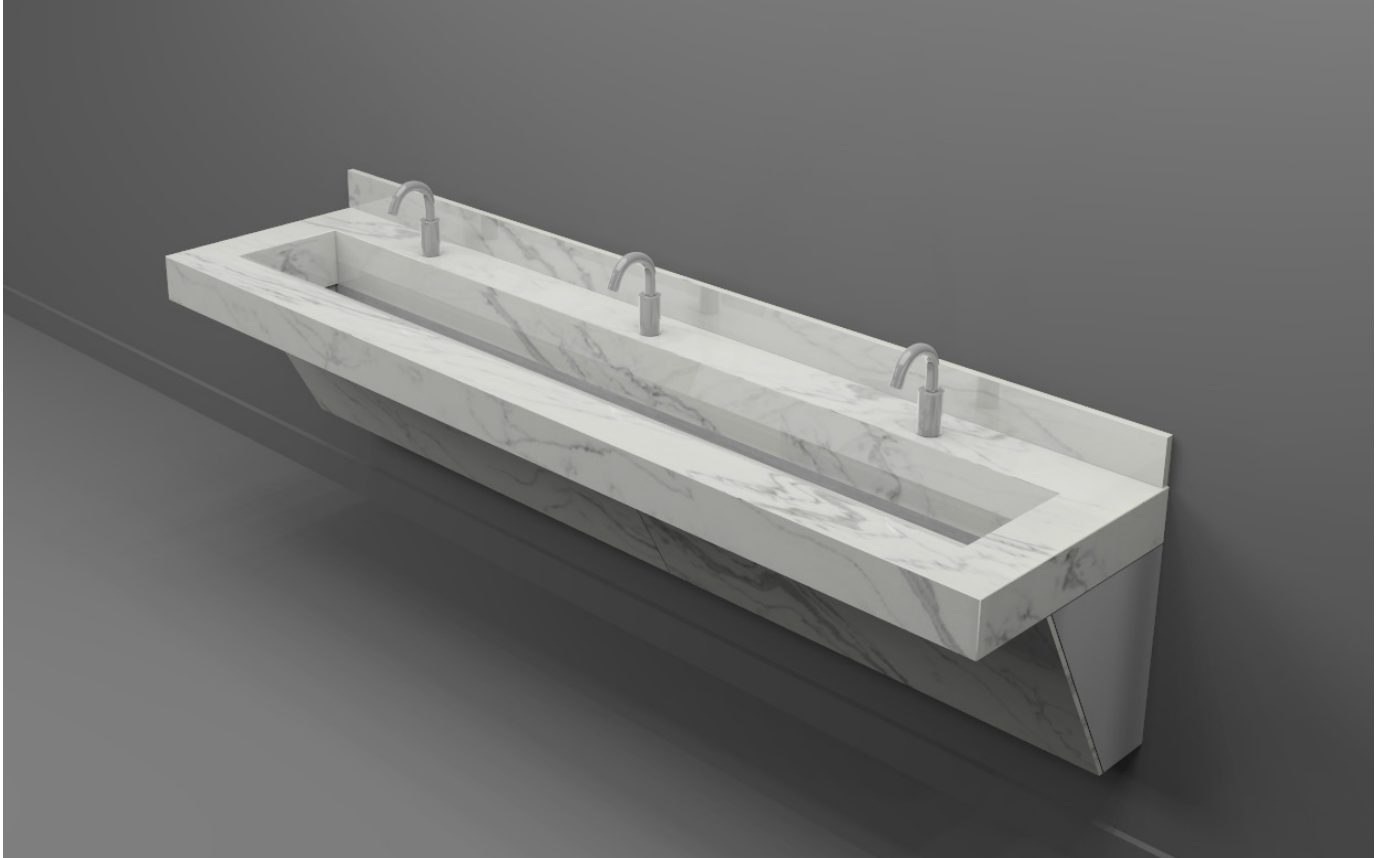
For complete product specifications, visit [futrus.com](http://futrus.com).

All Corian® solid surface colors and thicknesses carry the highest "interior finishes" rating. Corian® is:

- Class I (Class A) fire rated
- GREENGUARD Gold for children and schools
- GREENGUARD Indoor Air Quality Certified®
- GREENGUARD listed for Microbial resistance

**FUTRUS**  
SOLUTIONS WITH CORIAN® DESIGN

[futrus.com](http://futrus.com)  
[info@futrus.com](mailto:info@futrus.com)  
1.877.FUTRUS1 (388.7871)



FUTRUS<sup>®</sup> NA-TRO TROUGH SINKS

# FUTRUS® NA-TRO TROUGH SINKS



The Futrus® Na-TRO Trough Sink and Na-TRO Sink Module features a seamlessly integrated sink and countertop, made from Corian® Quartz for natural beauty, lasting durability and easy cleanability.

The graduated basin slope directs water away to reduce splashing. Countertop areas can be minimized to prevent water pooling. Non-porous, bleach cleanable Corian® Quartz surfaces are highly durable and resist mold and bacteria growth for greater hygiene. The design provides a modern, streamlined look and enables easy maintenance. Designed for wall-to-wall installation or as a module, all models are ADA compliant and ideal for commercial or healthcare environments.

- Made with Corian® Quartz
- ADA compliant
- Self-draining sloped basin
- Bleach cleanable
- Resists scratching and staining
- Corian® Quartz is GREENGUARD certified
- Nonporous
- Easy installation & maintenance

## STANDARD NA-TRO TROUGH SINK FEATURES

- 1-Station, 2-Station & 3-Station options
- Widths: 5', 6', 7', 8', 9'
- Depths: 23"
- Apron: 4½" tall
- Ends: Unfinished [wall to wall install only]
- Faucet and drain cut-outs
- Corian® Quartz Colors: London Sky, Snow White, Stratus White, Coarse Carrara, Concrete Carrara
- 1 year warranty; Corian® 10 year limited warranty

## STANDARD NA-TRO MODULE FEATURES

- Height: 34" overall
- Base: Corian® Quartz or Laminate
- Ends: Unfinished [wall to wall install] or finished
- Corian® Quartz Colors: London Sky, Snow White, Stratus White, Coarse Carrara, Concrete Carrara
- Laminate Colors: Cherry, Maple or Walnut

## CUSTOMIZATIONS

- Available in all Corian® Quartz colors and patterns
- Custom sizes available [lengths over 9' require multiple sinks]



For complete product specifications, visit [futrus.com](http://futrus.com).

All Corian® Quartz colors and thicknesses are:  
- Class I (Class A) fire rated  
- GREENGUARD Gold  
- GREENGUARD Indoor Air Quality Certified®

**FUTRUS**  
SOLUTIONS WITH CORIAN® DESIGN

[futrus.com](http://futrus.com)  
[info@futrus.com](mailto:info@futrus.com)  
1.877.FUTRUS1 (388.7871)