

FUTRUS® AQUABLADE TROUGH SINK MODULE CORIAN® ANTI-SPLASHBACK TROUGH SINK

FUTRUS
SOLUTIONS WITH CORIAN® DESIGN

designed with

CORIAN®
SOLID SURFACE

MODEL FABTRSM

Specification Sheet

Division 22 Plumbing Manufacturers

FEATURES

- Made from 100% Corian®
- ADA compliant when installed according to guidelines
- Anti-splash back & self-draining basin
- Bleach cleanable Corian® surfaces
- Tamperproof plumbing enclosure panel
- Resists scratching, staining, chipping & impacts
- Corian® surfaces resist the growth of viruses, bacteria & mold
- Includes support brackets
- Easy installation & maintenance

STANDARD CORIAN® COLOR OPTIONS

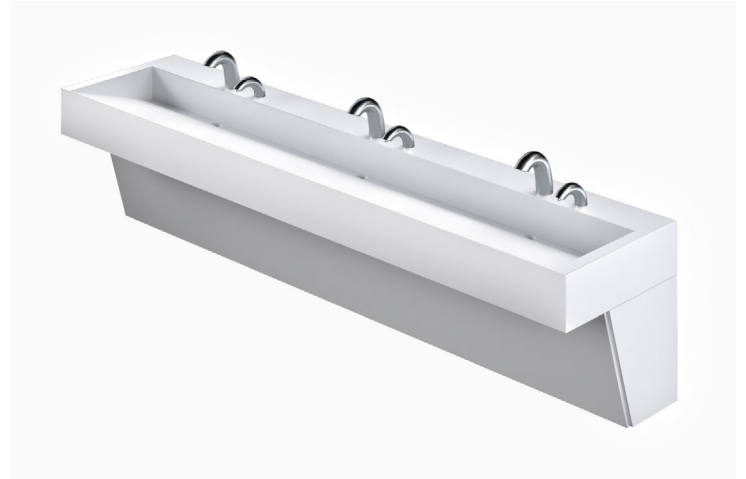
| Color* | Code | Description |
|--------|------|---------------|
| | 00 | Glacier White |
| | 01 | Cameo White |
| | 02 | Bisque |
| | 03 | Bone |
| | 04 | Silver Gray |
| | 05 | Vanilla |

Color tiles are for reference only*
[See full Corian® color choices](#)

OPTIONAL UPGRADES

| Code | Description |
|------|---------------------|
| FE | Finished Ends* |
| TCR | Trash cutout round |
| TCS | Trash cutout square |
| BB | Baby bowl |

Standard is wall-to-wall*



CERTIFICATIONS

- Complies with the requirements in CSA B45.5/IAPMO Z124 standard for plastic plumbing fixtures and the requirements in the HUD Use of Materials Bulletin No. 73a.
- Futrus® Trough Sinks are listed by Home Innovation Research Labs and UL as meeting the requirements of the Uniform Plumbing Code, the International Plumbing Code and are listed by ULC as meeting the requirements of the National Plumbing Code of Canada.
- NSF/ANSI Standard 51 certified
- GREENGUARD certified to resist the growth of viruses, bacteria & mold
- GREENGUARD Gold low VOC emissions
- Contributes to LEED certification credits
- Class 1 (Class A) fire rated

FUTRUS® AQUABLADE TROUGH SINK MODULE CORIAN® ANTI-SPLASHBACK TROUGH SINK

FUTRUS
SOLUTIONS WITH CORIAN® DESIGN

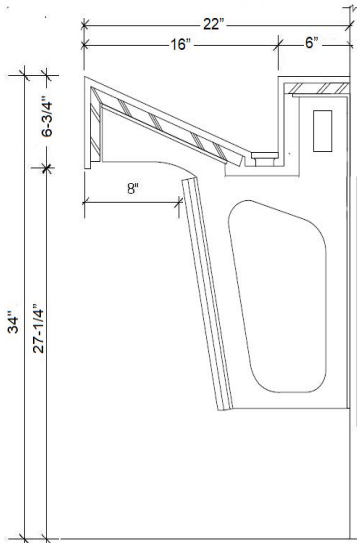
designed with



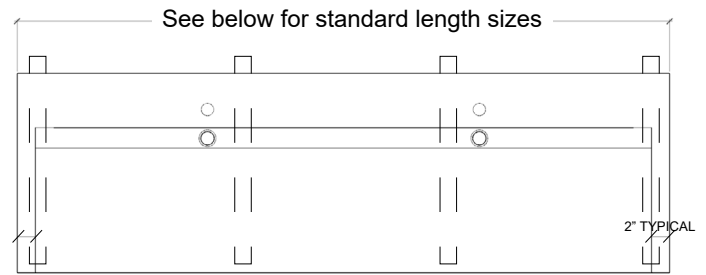
MODEL FABTRSM

Specification Sheet

Division 22 Plumbing Manufacturers



Side Cross Section



Top View

STANDARD SIZES

Trough Sink Dimensions (Inches)

| Code | Length | Depth | Apron | Station Qty |
|------------------|--------|-------|----------------------------------|-------------|
| FABTRSM_24_22_7 | 24" | 22" | 6- ³ / ₄ " | 1 |
| FABTRSM_36_22_7 | 36" | 22" | 6- ³ / ₄ " | 1 |
| FABTRSM_48_22_7 | 48" | 22" | 6- ³ / ₄ " | 1 |
| FABTRSM_60_22_7 | 60" | 22" | 6- ³ / ₄ " | 2 |
| FABTRSM_72_22_7 | 72" | 22" | 6- ³ / ₄ " | 2 |
| FABTRSM_84_22_7 | 84" | 22" | 6- ³ / ₄ " | 2 |
| FABTRSM_96_22_7 | 96" | 22" | 6- ³ / ₄ " | 2 |
| FABTRSM_108_22_7 | 108" | 22" | 6- ³ / ₄ " | 3 |
| FABTRSM_120_22_7 | 120" | 22" | 6- ³ / ₄ " | 3 |
| FABTRSM_132_22_7 | 132" | 22" | 6- ³ / ₄ " | 3 |
| FABTRSM_144_22_7 | 144" | 22" | 6- ³ / ₄ " | 4 |
| CUSTOM | | | | |

Custom lengths & configurations available*

EXAMPLE MODEL SPECIFICATION

FABTRSM_48_22_7_GLACIERWHITE_BB

(Model_Length_Depth_Apron Height_Corian Color_Optional Extra)

TECHNICAL INFORMATION

- All dimensions are nominal
- Futrus® 1-year limited warranty
- Corian® 10-year material warranty

RECOMMENDED SPECIFICATION- PLUMBING FIXTURES SECTION 22

The Futrus AquaBLADE Trough Sink Module, model FABTRSM. Sink shall be made of 100% Corian® solid surface and feature a seamlessly integrated anti-splashback slope and self-draining basin. Sink shall be certified to meet Uniform Plumbing Code requirements in USA & Canada. Sink designed to be ADA compliant and supplied with mounting brackets. Division 22 Plumbing Manufacturers.