

**FUTRUS® KURVO SINK MODULE- CURVED RIGHT
LIGATURE-RESISTANT SINK MODULE WITH PLUMBING
ENCLOSURE MADE WITH CORIAN®**



designed with



MODEL FKURVO_R

Specification Sheet

Division 22 Plumbing Manufacturers

FEATURES

- Made with Corian®
- Ligature-resistant design
- ADA compliant
- Bleach cleanable
- Corian® resists scratching, staining, chipping & impacts
- Seamless & nonporous
- Tamperproof Corian® plumbing enclosure panel
- Easy installation & maintenance
- Corian® is GREENGUARD® certified to resist mold & bacteria growth
- Choice of colors & configurations

STANDARD CORIAN® COLOR OPTIONS

Color*	Code	Description
	00	Glacier White
	01	Cameo White
	02	Bisque
	03	Bone
	04	Silver Gray
	05	Vanilla

Color tiles are for reference only*
[See full Corian® color choices](#)

OPTIONAL UPGRADES

Code	Description
BS	Backsplash*
CS	Coved backsplash

Standard is no backsplash*



CERTIFICATIONS

All Corian® & Corian® Quartz materials are:

- GREENGUARD certified to resist the growth of viruses, bacteria & mold
- Class 1 (Class A) fire rated
- GREENGUARD Gold
- GREENGUARD Indoor Air Quality Certified
- Contributes to LEED certification credits

FUTRUS® KURVO SINK MODULE- CURVED RIGHT
LIGATURE-RESISTANT SINK MODULE WITH PLUMBING
ENCLOSURE MADE WITH CORIAN®



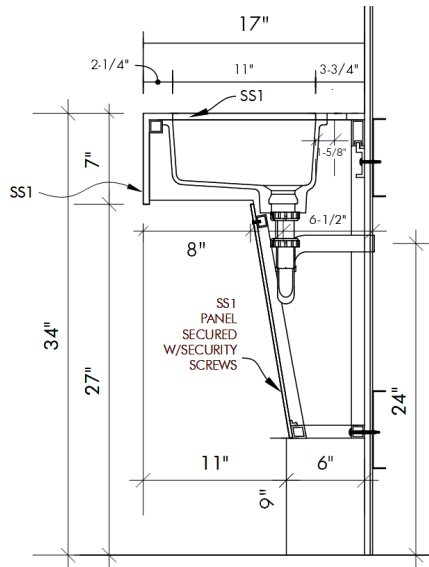
designed with



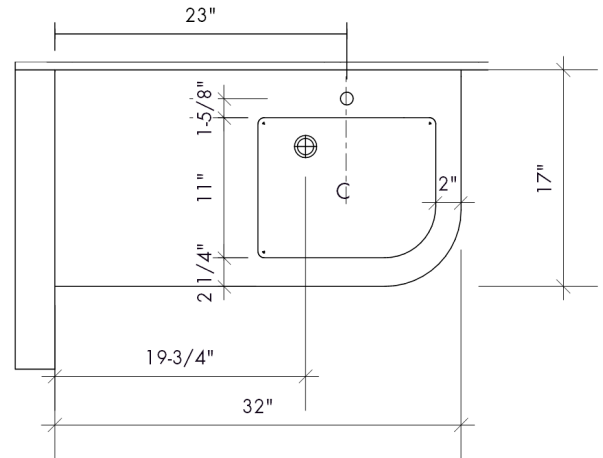
MODEL FKURVO_R

Specification Sheet

Division 22 Plumbing Manufacturers



Side Cross Section



Top View

STANDARD SIZES

Dimensions (Inches)

Code	Width	Depth	Apron
FKURVO_R	32"	17"	7"
CUSTOM			

TECHNICAL INFORMATION

- All dimensions are nominal
- Futrus® 1-year limited warranty
- Corian® 10-year material warranty

EXAMPLE MODEL SPECIFICATION

FKURVO_R_GLACIERWHITE_BS
 (Model_Corian Color_Optional Extra)

RECOMMENDED SPECIFICATION-
 PLUMBING FIXTURES SECTION 22

The Futrus Kurvo Sink Module- Curved Right, model FKURVO_R. Basin, countertop, backsplash and sidesplash fabricated from seamless Corian® and solid surface. Module designed to be ligature-resistant with a Corian® tamperproof plumbing enclosure. All framing components shall be made of moisture resistant stainless steel. Standard lavatory height at 34" to conform with ANSI, UFAS and ADA standards. Division 22 Plumbing Fixtures.