

FUTRUS® KURVO SINK MODULE- DOUBLE CURVE SINK

SOLID SURFACE LIGATURE-RESISTANT SINK MODULE WITH PLUMBING ENCLOSURE INCLUDED

MODEL FKURVO_D

Specification Sheet

Division 22 Plumbing Manufacturers

FEATURES

- Made from Corian®
- Ligature-resistant design
- ADA compliant
- Bleach cleanable
- Corian® resists scratching, staining, chipping & impacts
- Seamless & nonporous
- Tamperproof Corian® plumbing enclosure panel
- Easy installation & maintenance
- Corian® is GREENGUARD® certified to resist mold & bacteria growth
- Choice of colors & configurations

STANDARD CORIAN® COLOR OPTIONS

Color*	Code	Description
	GW	Glacier White
	CW	Cameo White
	BI	Bisque
	BN	Bone
	VY	Silver Gray
	NL	Vanilla

Color tiles are for reference only*

See full Corian® color options at futrus.com

OPTIONAL UPGRADES

Code	Description
BS	Backsplash*
CS	Coved backsplash

Standard is no backsplash*



CERTIFICATIONS

All Corian® & Corian® Quartz materials are:

- GREENGUARD certified to resist the growth of viruses, bacteria & mold
- Class 1 (Class A) fire rated
- GREENGUARD Gold
- GREENGUARD Indoor Air Quality Certified
- Contributes to LEED certification credits



futrus.com
info@futrus.com

1.877.388.FUTRUS1 [388.7871]

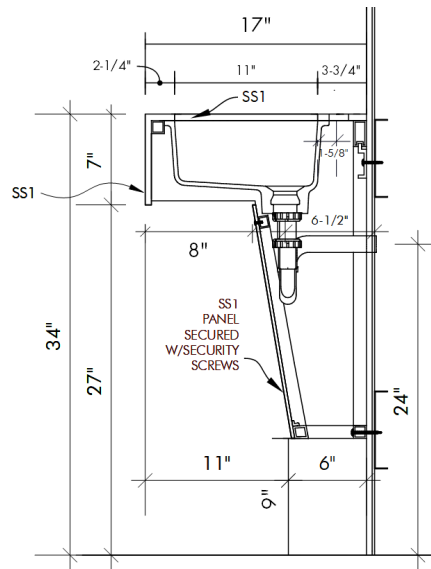
FUTRUS® KURVO SINK MODULE- DOUBLE CURVE SINK

SOLID SURFACE LIGATURE-RESISTANT SINK MODULE WITH PLUMBING ENCLOSURE INCLUDED

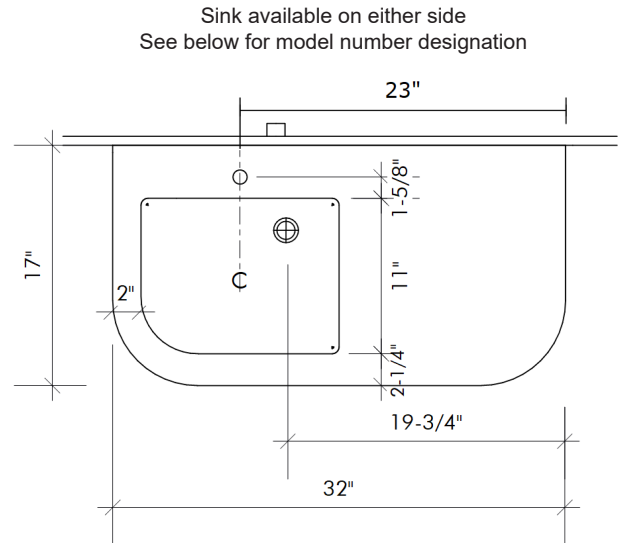
MODEL FKURVO_D

Specification Sheet

Division 22 Plumbing Manufacturers



Side Cross Section



Top View

STANDARD SIZES

Dimensions (Inches)

Code	Width	Depth	Apron	Sink Location
FKURVO_D_R	32"	17"	7"	RIGHT
FKURVO_D_L	32"	17"	7"	LEFT
CUSTOM				

TECHNICAL INFORMATION

- All dimensions are nominal
- Futrus® 1-year limited warranty
- Corian® 10-year material warranty

EXAMPLE MODEL SPECIFICATION

FKURVO_D_R_GW_BS
(Model_Corion_Color_Optional Extra)

RECOMMENDED SPECIFICATION- PLUMBING FIXTURES SECTION 22

The Futrus Kurvo Sink Module- Double Curve Sink, model FKURVO_D. Basin, countertop, backsplash and sidesplash fabricated from seamless solid surface. Module designed to be ligature-resistant with a solid surface tamperproof plumbing enclosure. All framing components shall be made of moisture resistant stainless steel. Standard lavatory height at 34" to conform with ANSI, UFAS and ADA standards. Division 22 Plumbing Fixtures.



futrus.com
info@futrus.com