

# FUTRUS® SERENITI SHELVING SYSTEM

ANTI-LIGATURE SHELVING SYSTEM MADE FROM CORIAN®  
SOLID SURFACE

FUTRUS®  
SOLUTIONS WITH CORIAN® DESIGN

designed with



## MODEL SERENITI\_SHELF

Specification Sheet

Division 12 FF&E Sec. 12 33 00

### FEATURES

- 100% Corian® surfaces
- Bleach cleanable
- Impact resistant
- Patented construction
- Anti-ligature & tamperproof
- Rounded edges
- Seamless & nonporous
- Resists scratching, staining, chipping & peeling
- Standard & custom sizes
- Available in all Corian® colors
- GREENGUARD® Certified to resist mold, virus & bacteria growth
- NSF/ANSI Standard 51 certified for food contact
- Class A1 fire rated

### STANDARD CORIAN® COLOR OPTIONS

Color*	Code	Description
	GW	Glacier White
	CW	Cameo White
	BI	Bisque
	BN	Bone
	VY	Silver Gray
	NL	Vanilla

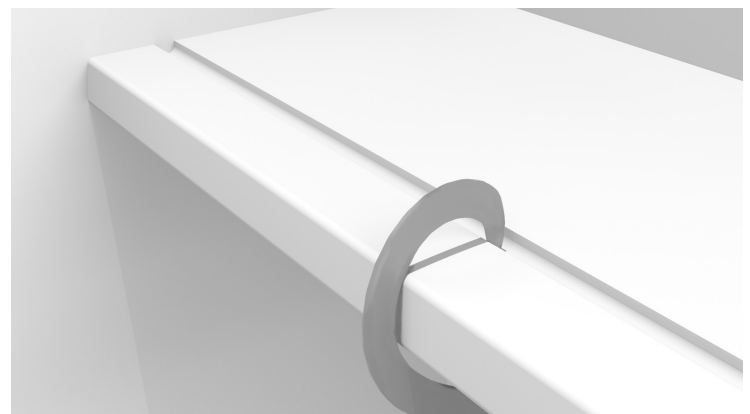
Color tiles are for reference only\* See all color options on futrus.com

### CERTIFICATIONS

- GREENGUARD certified to resist the growth of viruses, bacteria & mold
- GREENGUARD Gold low VOC emissions
- Contributes to LEED certification credits
- Class 1 (Class A) fire rated



- Sereniti Shelving - Standard
- Sereniti Shelving - Wardrobe



- Wardrobe Hanging Shelf Detail

### OPTIONAL UPGRADES

Code	Description
WC	Wardrobe configuration*
DC	Desktop configuration - 50"H**

\*Includes 1 hanging shelf and 2 shelves; must be 23"D

\*\*Must be 15"D

# FUTRUS® SERENITI SHELVING SYSTEM

ANTI-LIGATURE SHELVING SYSTEM MADE FROM CORIAN®  
SOLID SURFACE



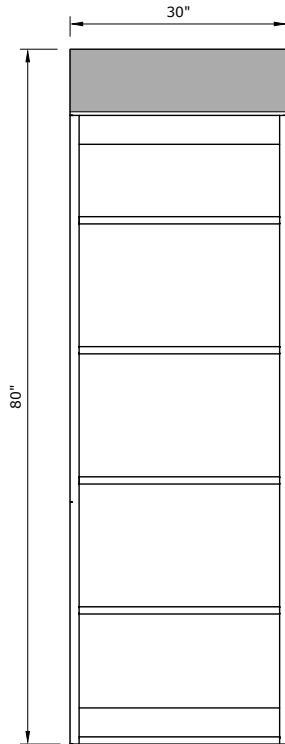
designed with



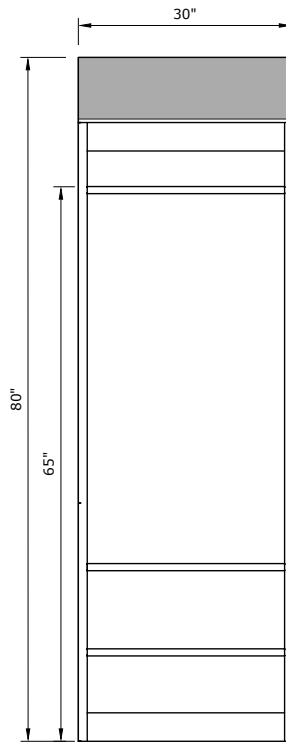
## MODEL SERENITI\_SHELF

Specification Sheet

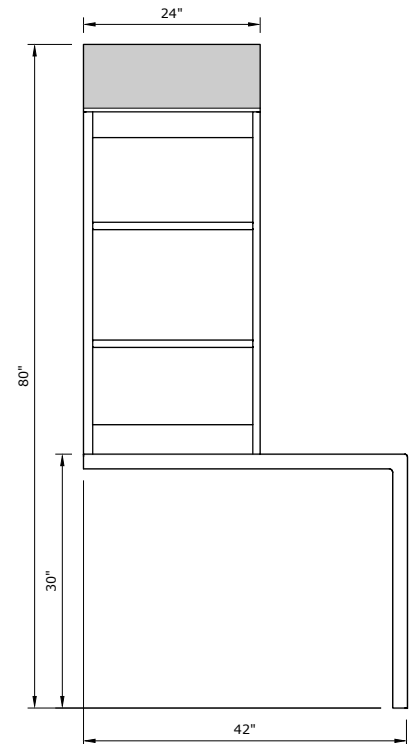
Division 12 FF&E Sec. 12 33 00



Front Elevation (Standard)



Front Elevation (Wardrobe)



Front Elevation (Desktop Configuration)

### STANDARD SIZES

#### Dimensions (Inches)

Code	Width	Depth	Height
SERENITI_SHELF_23	24"	23"	80"
SERENITI_SHELF_15	24"	15"	80"
CUSTOM			

\* Wardrobe configuration requires 23" depth

\*\* Desktop configuration requires 15" depth; total height includes desk height

### EXAMPLE MODEL SPECIFICATION

#### SERENITI\_SHELF\_23\_GW\_5

(Model\_Width\_Corian Color\_Shelf Qty\_Optional Upgrade)

### TECHNICAL INFORMATION

- All dimensions are nominal
- Futrus® 5-year limited warranty
- Corian® 10-year material warranty

### RECOMMENDED SPECIFICATION

The Futrus Sereniti Shelf System, Model SERENITI\_SHELF. Shelf system to be made of Corian® solid surface and utilize Futrus patented construction. Shelf system to be NSF/ANSI Standard 51 certified, Class A1 fire rated and GREENGUARD certified to resist the growth of viruses, bacteria & mold; GREENGUARD Gold low VOC emissions; Contribute to LEED certification credits; Class 1 (Class A) fire rated.