

COLOR & MATERIAL OPTIONS



Corian® Quartz Group 0 Colors

(Please use Spec Code when specifying material selection)

Colors are for reference only & may vary from actual sample



Hushed Gray
Spec Code: HGR



Quiet White
Spec Code: QWH

Corian® Quartz Group 1 Colors

(Please use Spec Code when specifying material selection)

Futrus uses 2cm Quartz as its standard thickness, 3cm can be used upon request with an upcharge



Cloud White
Spec Code: CWH



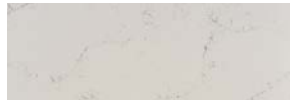
Coarse Pepper
Spec Code: CPR



Dove Grey
Spec Code: DGR



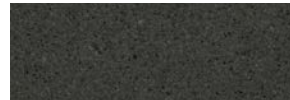
Graphite
Spec Code: GPH



London Abbey
Spec Code: LOA



Snow Drift
Spec Code: SND



Storm Grey
Spec Code: SGR



Stratus White
Spec Code: STW

*Corian® Colors that feature veined aesthetics are unique and each piece may vary slightly in pattern and vein intensity which may highlight seams.



Tahitian Sand
Spec Code: TAS

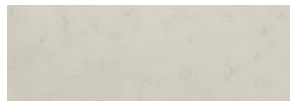


Venetia Cream
Spec Code: VEN

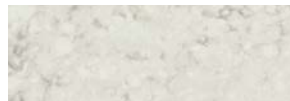
Corian® Group 2 Colors

(Please use Spec Code when specifying material selection)

**Colors with Leathered finish require additional care and maintenance.



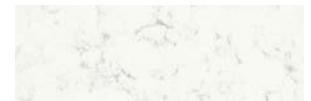
Arabesque Perla
Spec Code: ARP



Ashen Grey
Spec Code: AGR



Beige Royale
Spec Code: BRO



Coarse Carrara
Spec Code: CCA



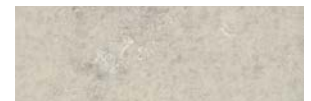
Grigione
Spec Code: GRI



Indigo Swirl
Spec Code: ISW



London Royal
Spec Code: LOR



Marble Mist
Spec Code: MST

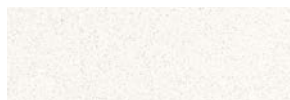
◆ Indicates matte finish.



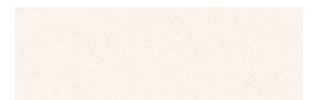
Névé
Spec Code: NEV



Pearl Stone
Spec Code: PST



Snow Flurry
Spec Code: SFL



Snow White
Spec Code: SWH

COLOR & MATERIAL OPTIONS



Corian® Quartz Group 3 Colors

(Please use Spec Code when specifying material selection)

Colors are for reference only & may vary from actual sample



Ashen Grey Leathered
Spec Code: AGL

Bianco Dolomite
Spec Code: BDM

Bianco Pur
Spec Code: BIP

Black Goldstone
Spec Code: BGS



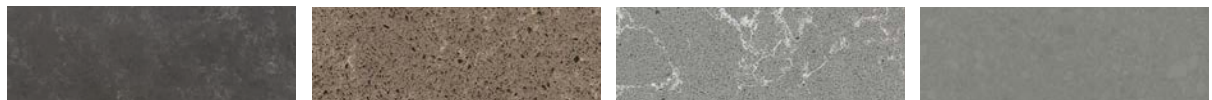
Blue Carrara
Spec Code: BCA

Calacatta Medallion
Spec Code: CAM

Calacatta Novello
Spec Code: CAN

Calacata Villa
Spec Code: CAV

Futrus uses 2cm Quartz as its standard thickness, 3cm can be used upon request with an upcharge



Carbon Cement ♦
Spec Code: CBC

Coarse Pepper Leathered
Spec Code: CPL

Concrete Carrara
Spec Code: CON

Dove Grey Leathered
Spec Code: DGL

*Corian® Colors that feature veined aesthetics are unique and each piece may vary slightly in pattern and vein intensity which may highlight seams.



Ethereal White
Spec Code: ETW

Geo Grigio
Spec Code: GEG

Ironstone ♦
Spec Code: IRS

Neutral Cement ♦
Spec Code: NEC



Night Soapstone ♦
Spec Code: NSS

Oyster Grigio
Spec Code: OYG

Portoro
Spec Code: POR

Slate Geo
Spec Code: SLG

**Colors with Leathered finish require additional care and maintenance.



Storm Grey Leathered
Spec Code: SGL

Stratus White Leathered
Spec Code: STL

Venetia Cream Leathered
Spec Code: VEL

Corian® Quartz Group 4 Colors

(Please use Spec Code when specifying material selection)

♦ Indicates matte finish.



Alabaster Terrazzo
Spec Code: ALT

Bianco Marmor
Spec Code: BIM

Calacatta Natura
Spec Code: CAL

Estate Quartzite
Spec Code: EQZ



Smoked Quartzite
Spec Code: SQZ

Valente Pearl
Spec Code: VLP

Versillia Grigio
Spec Code: VER