

**FUTRUS® AQUABLADE TROUGH SINK MODULE**  
**ANTI-SPLASHBACK TROUGH SINK MADE WITH CORIAN®**  
**SOLID SURFACE, WITH MINIMIZED FRONT EDGE PROFILE**  
**AND PLUMBING ENCLOSURE INCLUDED**



**MODEL FABTRSM**

Specification Sheet  
 Division 22 Plumbing Manufacturers

**FEATURES**

- Made from 100% acrylic solid surface
- ADA compliant when installed according to guidelines
- Anti-splash back & self-draining basin
- Bleach cleanable solid surface surfaces
- Tamperproof plumbing enclosure panel
- Resists scratching, staining, chipping & impacts
- Solid surfaces resist the growth of viruses, bacteria & mold
- Includes support brackets
- Easy installation & maintenance



**STANDARD SOLID SURFACE COLOR OPTIONS (SS)**

Color*	Code	Description
	GW	Glacier White
	CW	Cameo White
	BI	Bisque
	BN	Bone
	VY	Silver Gray
	NL	Vanilla
	ALT	Alternate Solid Surface

Color tiles are for reference only\*  
 See full standard solid surface color options at [futrus.com](http://futrus.com)

**OPTIONAL UPGRADES (OU)**

Code	Description
FE	Finished Ends*
TCR	Trash cutout round
TCS	Trash cutout square
BB	Baby bowl
BS	Backsplash Shelf [for wall mounted faucets]

Standard is wall-to-wall\*

**STANDARD SOLID SURFACE CERTIFICATIONS**

- Complies with the requirements in CSA B45.5/IAPMO Z124 standard for plastic plumbing fixtures and the requirements in the HUD Use of Materials Bulletin No. 73a.
- Futrus® Trough Sinks are listed by Home Innovation Research Labs and UL as meeting the requirements of the Uniform Plumbing Code, the International Plumbing Code and are listed by ULC as meeting the requirements of the National Plumbing Code of Canada.
- NSF/ANSI Standard 51 certified
- Solid surfaces are GREENGUARD certified to resist the growth of viruses, bacteria & mold
- Solid surfaces GREENGUARD Gold low VOC emissions
- Contributes to LEED certification credits
- Class 1 (Class A) fire rated



# FUTRUS® AQUABLADE TROUGH SINK MODULE

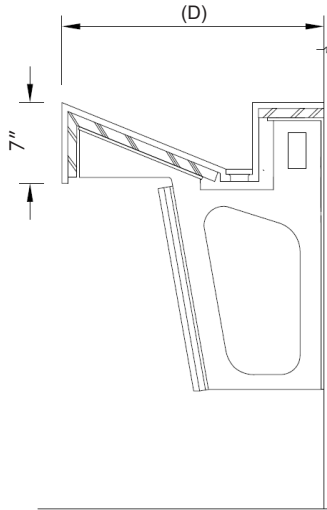
ANTI-SPLASHBACK TROUGH SINKS MADE WITH CORIAN®  
SOLID SURFACE, WITH MINIMIZED FRONT EDGE PROFILE  
AND PLUMBING ENCLOSURE INCLUDED



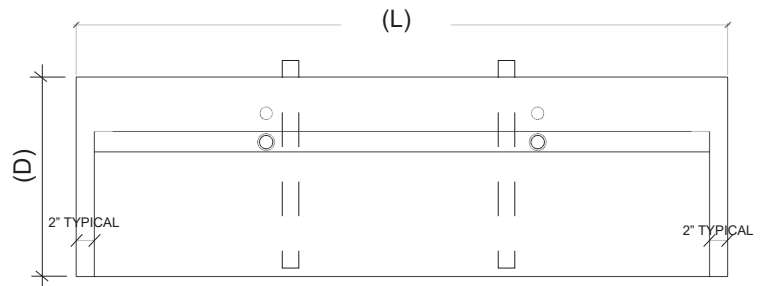
## MODEL FABTRSM

Specification Sheet

Division 22 Plumbing Manufacturers



Side Cross Section



Top View

### STANDARD SIZES

#### Trough Sink Dimensions (Inches)

Code	Length (L)	Depth (D)	Apron	Station Qty*
FABTRSM_24_24_6	24"	24"	6-3/4"	1
FABTRSM_36_24_6	36"	24"	6-3/4"	1
FABTRSM_48_24_6	48"	24"	6-3/4"	1
FABTRSM_60_24_6	60"	24"	6-3/4"	2
FABTRSM_72_24_6	72"	24"	6-3/4"	2
FABTRSM_84_24_6	84"	24"	6-3/4"	2
FABTRSM_96_24_6	96"	24"	6-3/4"	2
FABTRSM_108_24_6	108"	24"	6-3/4"	3
FABTRSM_120_24_6	120"	24"	6-3/4"	3
FABTRSM_132_24_6	132"	24"	6-3/4"	3
FABTRSM_144_24_6	144"	24"	6-3/4"	4
CUSTOM				

Custom lengths & configurations available\*

### EXAMPLE MODEL SPECIFICATION

FABTRSM       
(MODEL - (L) - (D) - (SS) - (OU1) - (OU2))

### TECHNICAL INFORMATION

- All dimensions are nominal
- Futrus® 1-year limited warranty
- Corian® 10-year material warranty

### RECOMMENDED SPECIFICATION- PLUMBING FIXTURES SECTION 22

The Futrus AquaBLADE Trough Sink Module, model FABTRSM. Sink shall be made of 100% solid surface and feature a seamlessly integrated anti-splashback slope and self-draining basin. Sink designed to be ADA compliant and supplied with mounting brackets. Division 22 Plumbing Manufacturers. Must be Home Innovation Research Lab & UL certified to meet Uniform Plumbing Code and International Plumbing Code requirements in USA & Canada.



futrus.com

info@futrus.com

1.877.388.FUTRUS1 [388.7871]

Futrus LTD All Rights Reserved Copying or distribution of this design, in whole or in part, is strictly prohibited

Futrus® is a registered trademark of Futrus LTD. Corian® is a trademark of affiliates of DuPont de Nemours, Inc. Dimensions are nominal for reference only.

Copyright © 2025 Futrus. All rights reserved.