

FUTRUS® IMAGE HEALTHWALLS™

SERVICES & EQUIPMENT ARE CONCEALED BEHIND A CUSTOMIZABLE ARTWORK

MODEL IMAGE_H

Specification Sheet

Division 10 Patient Bed Service Walls





FEATURES

- Made with Corian® solid surface
- Bleach cleanable
- Seamless & nonporous
- Resists scratching, staining, chipping & impacts
- GREENGUARD® Certified to resist mold, virus & bacteria growth
- Available in a range of Corian® colors
- 12 years parts & labor warranty
- 100% USA manufactured

STANDARD CORIAN® COLOR OPTIONS

Color*	Code	Description
	GW	Glacier White
	CW	Cameo White
	BI	Bisque
	BN	Bone
	VY	Silver Gray
	NL	Vanilla

STANDARD LAMINATE COLOR OPTIONS

Color*	Code	Description
	LW / TW	Laminate Walnut / Thermofoil Walnut
	LC / TC	Laminate Cherry / Thermofoil Cherry
	LM / TM	Laminate Maple / Thermofoil Maple
	LA1 / T1	Laminate White / Thermofoil White
	LA2 / T2	Laminate Black / Thermofoil Black

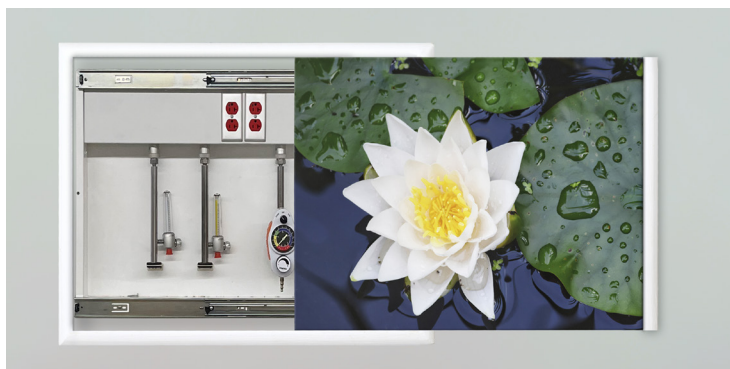
Color tiles are for reference only*
See full Corian® color choices at futrus.com

STANDARD OPTIONS

- Medical Gas Outlets
- Can accommodate electrical devices within panel
- Data & Communications
- Available with vertical or horizontal slide



• Flush-Mount Image Healthwall™



• Recessed-Mount Image Healthwall™

CERTIFICATIONS

- NSF/ANSI Standard 51 certified
- GREENGUARD certified to resist the growth of viruses, bacteria & mold
- GREENGUARD Gold low VOC emissions
- Contributes to LEED certification credits
- Class 1 (Class A) fire rated
- All components are UL listed or UL recognized
- Complies with the seismic requirements of, and is approved by, the State of California's Office of Statewide Health Planning and Development (OSPHD).
- Manufactured in accordance with the National Fire Protection Association (NFPA), NFPA-99 (current edition) and National Electric Code (NEC).

The installation contractor is responsible for compliance with all local, state, and federal codes applicable to the installation of medical gas and electrical systems.



futrus.com
info@futrus.com

FUTRUS® FLUSH-MOUNT IMAGE HEALTHWALL™

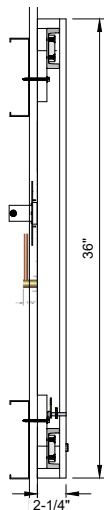
EXISTING SERVICES & EQUIPMENT ARE CONCEALED
BEHIND A CUSTOMIZABLE ARTWORK SHROUD



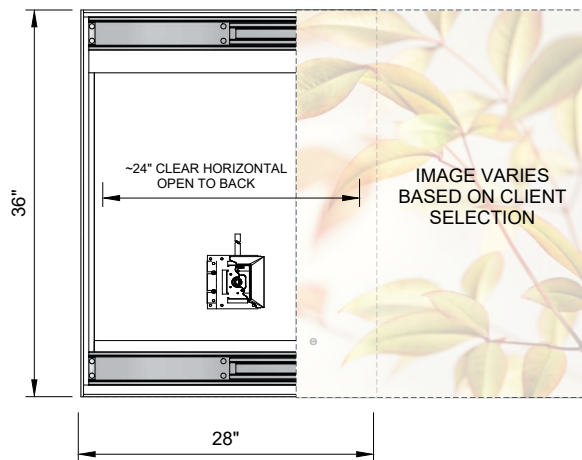
MODEL IMAGE_HFM

Specification Sheet

Division 10 Patient Bed Service Walls



Side Elevation



Front Elevation

STANDARD HEALTHWALL SIZE

Dimensions (Inches)

Code	Width	Height	Depth
IMAGE_H_28_36_2.25	28"	36"	2.25"
IMAGE_H_36_28_2.25	36"	28"	2.25"
CUSTOM			

*All sizes available with left or right slides. 2 panel systems will open in center

OPTIONAL UPGRADES

Code	Description
3D	3D Texture
BL	Back Lighting
DS	Dye Sublimated Image
UV	UV Printed Image
2P	2 Panels with center opening

EXAMPLE MODEL SPECIFICATION

IMAGE_H_28_36_2.25_GLACIERWHITE_GOLDENRADIA
(Model_Width_Height_Depth_Corlan Color_Lam/Therm Color_Image_Optional Upgrade)
(If Applicable)

TECHNICAL INFORMATION

- All dimensions are nominal
- 12 years parts & labor warranty
- Corlan® 10-year material warranty

RECOMMENDED SPECIFICATION

The Futrus Flush-Mount Image Healthwall™, Model IMAGE_HFM. Image Healthwall™ to be made of solid surface and laminate or thermofoil components. Healthwall to be NSF/ANSI Standard 51 certified; GREENGUARD certified to resist the growth of viruses, bacteria & mold; GREENGUARD Gold low VOC emissions; Contribute to LEED certification credits; Class 1 (Class A) fire rated.

Please contact Futrus for detailed specifications, sizing and quoting.



futrus.com
info@futrus.com

1.877.388.FUTRUS1 [388.7871]

Futrus LTD All Rights Reserved Copying or distribution of this design, in whole or in part, is strictly prohibited

Futrus® is a registered trademark of Futrus LTD. Corlan® is a trademark of affiliates of DuPont de Nemours, Inc. Dimensions are nominal for reference only.

Copyright © 04/2025 Futrus. All rights reserved.

FUTRUS® RECESSED-MOUNT IMAGE HEALTHWALL™

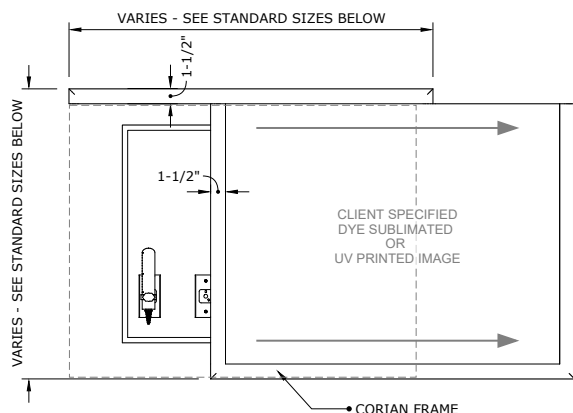
SERVICES & EQUIPMENT ARE CONCEALED BEHIND A CUSTOMIZABLE ARTWORK WITH A RECESSED BACKBOX



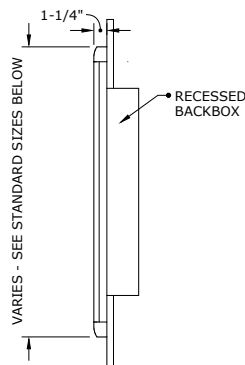
MODEL IMAGE_HR

Specification Sheet

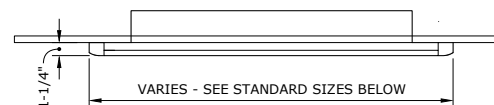
Division 10 Patient Bed Service Walls



Front Elevation



Side Elevation



Top Elevation

STANDARD HEALTHWALL SIZE

Dimensions (Inches)

Code	Width	Height	Depth
IMAGE_H_34.5_27.5_1.25	34.5	27.5	1.25"
IMAGE_H_48_27.5_1.25	48"	27.5"	1.25"
CUSTOM			

*All sizes available with left or right slides. 2 panel systems will open in center

OPTIONAL UPGRADES

Code	Description
3D	3D Texture
BL	Back Lighting
DS	Dye Sublimated Image
UV	UV Printed Image
2P	2 Panels with center opening

EXAMPLE MODEL SPECIFICATION

IMAGE_H_24.5_27.5_1.25_GLACIERWHITE_GOLDENRADIA
(Model_Width_Height_Depth_Corlan Color_Image_ Optional Upgrade)

TECHNICAL INFORMATION

- All dimensions are nominal
- 12 years parts & labor warranty
- Corian® 10-year material warranty

RECOMMENDED SPECIFICATION

The Futrus Image Healthwall, Model IMAGE_H. Image Healthwall to be made of solid surface components. Healthwall to be NSF/ANSI Standard 51 certified; GREENGUARD certified to resist the growth of viruses, bacteria & mold; GREENGUARD Gold low VOC emissions; Contribute to LEED certification credits; Class 1 (Class A) fire rated.

Please contact Futrus for detailed specifications, sizing and quoting.

