

# FUTRUS® TYDI CABINET

## TROUGH SINK TRASH STATION MADE WITH CORIAN® SOLID SURFACE

### MODEL FTYDI

#### Specification Sheet

#### Division 22 Plumbing Manufacturers

#### FEATURES

- Made with acrylic solid surface
- ADA compliant
- Bleach cleanable solid surface
- Solid surface resists scratching, staining, chipping & impacts
- Seamless & nonporous solid surface
- Easy installation & maintenance
- Solid surfaces are GREENGUARD® certified to resist mold & bacteria growth
- Available in variety of solid surface colors
- Choice of base cabinet materials
- Lockable base cabinet



- Tydi cabinet with hinged door

#### STANDARD SOLID SURFACE COLOR OPTIONS (SS)

Color*	Code	Description
	GW	Glacier White
	CW	Cameo White
	BI	Bisque
	BN	Bone
	VY	Silver Gray
	NL	Vanilla
	ALT	Alternate Solid Surface

Color tiles are for reference only\*

See full standard solid surface color options at [futrus.com](https://futrus.com)

#### OPTIONAL UPGRADES (OU)

Code	Description
FSS	Full solid surface case*
TPO	Trash pullout hardware**

Standard is laminate case with solid surface door\*

Standard is hinged door\*\*

#### STANDARD LAMINATE COLOR OPTIONS (LAM)

Color*	Code	Description
	LW / TW	Laminate Walnut / Thermofoil Walnut
	LC / TC	Laminate Cherry / Thermofoil Cherry
	LM / TM	Laminate Maple / Thermofoil Maple
	LA1 / T1	Laminate White / Thermofoil White
	LA2 / T2	Laminate Black / Thermofoil Black

Color tiles are for reference only\*

See full Corian® color choices at [futrus.com](https://futrus.com)

#### CERTIFICATIONS

##### All Corian® & Corian® Quartz materials are:

- GREENGUARD certified to resist the growth of viruses, bacteria & mold
- Class 1 (Class A) fire rated
- GREENGUARD Gold
- GREENGUARD Indoor Air Quality Certified
- Contributes to LEED certification credits



[futrus.com](https://futrus.com)

[info@futrus.com](mailto:info@futrus.com)

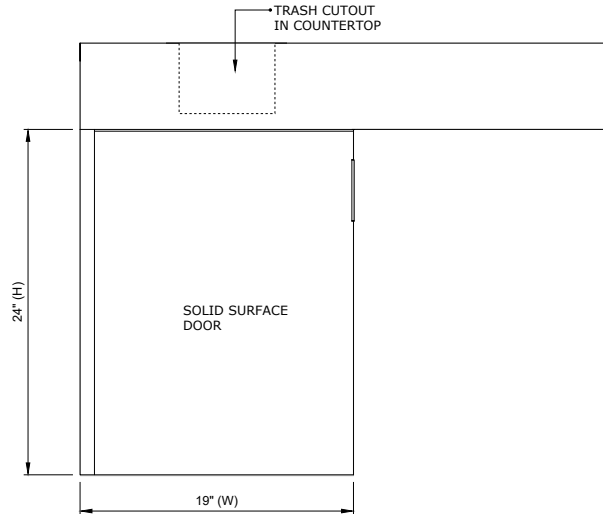
# FUTRUS® TYDI CABINET TROUGH SINK TRASH STATION MADE WITH CORIAN® SOLID SURFACE

**FUTRUS**  
SOLID SURFACE SOLUTIONS

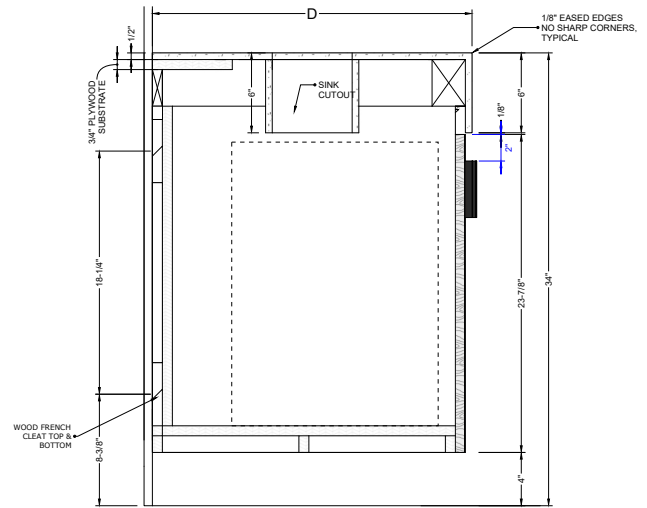
## MODEL FTYDI

### Specification Sheet

### Division 22 Plumbing Manufacturers



Front Elevation



Section [Standard Laminate Case]

### STANDARD SIZES

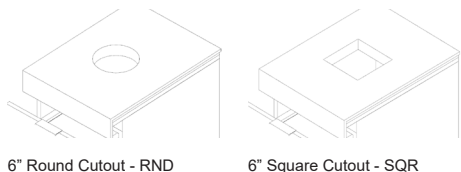
#### Dimensions (Inches)

Code	Cabinet Width (W)	Sink Depth (D)	Height
FCSMOD	19"	21"-24"	24"
CUSTOM			

### TECHNICAL INFORMATION

- All dimensions are nominal
- Futrus® 1-year limited warranty
- Corian® 10-year material warranty

### TRASH CUTOUT SHAPE OPTIONS



6" Round Cutout - RND

6" Square Cutout - SQR

### RECOMMENDED SPECIFICATION- PLUMBING FIXTURES SECTION 22

The Futrus Tydi Cabinet, model FTYDI. Cabinet to be made of solid surface and thermofoil or laminate components Casework to be GREENGUARD certified to resist the growth of viruses, bacteria & mold; GREENGUARD Gold low VOC emissions; Contribute to LEED certification credits; Class 1 (Class A) fire rated. Plumbing Fixtures Section 22.

### EXAMPLE MODEL SPECIFICATION

FTYDI \_ \_ \_ \_ \_  
(MODEL \_ (L) \_ (D) \_ (SS) \_ (LAM) \_ (CUTOUT) \_ (OU)



futrus.com  
info@futrus.com

Futrus LTD All Rights Reserved Copying or distribution of this design, in whole or in part, is strictly prohibited

1.877.388.FUTRUS1 [388.7871]

Futrus® is a registered trademark of Futrus LTD. Corian® is a trademark of affiliates of DuPont de Nemours, Inc. Dimensions are nominal for reference only.

Copyright © 2025 Futrus. All rights reserved.