

# FUTRUS® ANGLE X SINK

## UNDERMOUNT ADA COMPLIANT ANTI-SPLASHBACK SINKS MADE WITH 100% ACRYLIC SOLID SURFACE

**FUTRUS**  
SOLID SURFACE SOLUTIONS

### MODEL F1513

Specification Sheet

Division 22 Plumbing Manufacturers

#### FEATURES

- Made with 100% acrylic solid surface
- Anti-splashback slope
- Seamless & bleach cleanable
- Range of sizes & drain locations
- Resists mold, virus & bacteria growth
- Low maintenance
- Impact & chip resistant
- Optional overflow integration
- Repairable
- Easy installation
- No order minimums

#### STANDARD CORIAN® COLOR OPTIONS

Color*	Code	Description
	GW	Glacier White
	CW	Cameo White
	BI	Bisque
	BN	Bone
	VY	Silver Gray
	NL	Vanilla
	ALT	Alternate/Custom

Color tiles are for reference only\*

See full Corian® color options at [futrus.com](http://futrus.com)

#### CERTIFICATIONS

##### All Corian® materials are:

- GREENGUARD certified to resist the growth of viruses, bacteria & mold
- Class 1 (Class A) fire rated
- GREENGUARD Gold
- GREENGUARD Indoor Air Quality Certified
- NSF/ANSI Standard 51 certified
- Contributes to LEED certification credits



Offset Drain

#### OPTIONAL UPGRADES

Code	Description
CD	Center Drain*

Standard is offset drain\*



[futrus.com](http://futrus.com)  
[info@futrus.com](mailto:info@futrus.com)

1.877.388.FUTRUS1 [388.7871]

Futrus LTD All Rights Reserved Copying or distribution of this design, in whole or in part, is strictly prohibited

Futrus® is a registered trademark of Futrus LTD. Corian® is a trademark of affiliates of DuPont de Nemours, Inc. Dimensions are nominal for reference only.

Copyright © Futrus. All rights reserved.

# FUTRUS® ANGLE X SINK

## UNDERMOUNT ADA COMPLIANT ANTI-SPLASHBACK

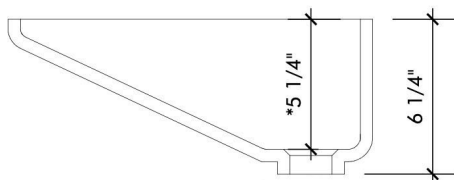
### SINKS MADE WITH 100% ACRYLIC SOLID SURFACE

**FUTRUS**  
SOLID SURFACE SOLUTIONS

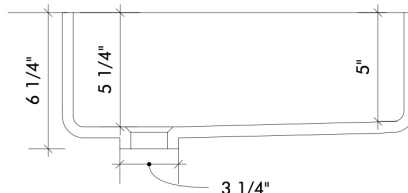
#### MODEL F1513

Specification Sheet

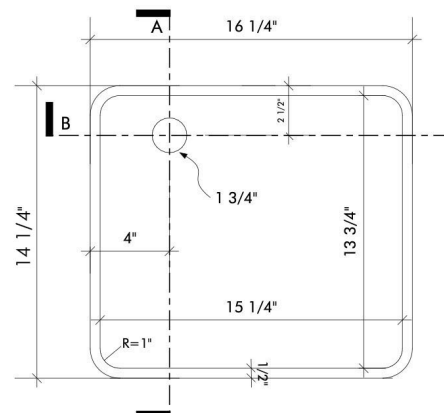
Division 22 Plumbing Manufacturers



Side Cross Section



Front Cross Section



Top View

#### STANDARD SIZES

##### Inside Bowl Dimensions (Inches)

Code	Width	Length	Depth
F1513	15 1/4"	13 3/4"	5 1/4"

#### TECHNICAL INFORMATION

- All dimensions are nominal
- Futrus® 1-year limited warranty
- Corian® 10-year limited warranty

#### EXAMPLE MODEL SPECIFICATION

F1513\_GW

(Model\_Corian Color)

#### RECOMMENDED SPECIFICATION- PLUMBING FIXTURES SECTION 22

The Futrus Angle X Sink, model F1513. Sink fabricated from seamless 100% solid surface. Conforms with ANSI, UFAS and ADA standards when installed according to recommendations. Division 22 Plumbing Fixtures.



futrus.com  
info@futrus.com

1.877.388.FUTRUS1 [388.7871]