

FUTRUS® ANGLE X SERIES SINK MODULE

ANTI-SPLASHBACK ADA SINK WITH INTEGRATED PLUMBING ENCLOSURE MADE WITH 100% ACRYLIC SOLID SURFACE

MODEL FAXMOD

Specification Sheet

Division 22 Plumbing Manufacturers

FEATURES

- Made with 100% acrylic solid surface
- Seamless & bleach cleanable
- Anti-Splashback basin
- Range of sizes & drain locations
- Resists mold, virus & bacteria growth
- Low maintenance
- Stain, impact & chip resistant
- Optional overflow integration
- Repairable
- Available in all solid surface colors
- Easy installation
- No order minimums

STANDARD CORIAN® COLOR OPTIONS

Color*	Code	Description
	GW	Glacier White
	CW	Cameo White
	BI	Bisque
	BN	Bone
	VY	Silver Gray
	NL	Vanilla
	ALT	Alternate/Custom

Color tiles are for reference only*

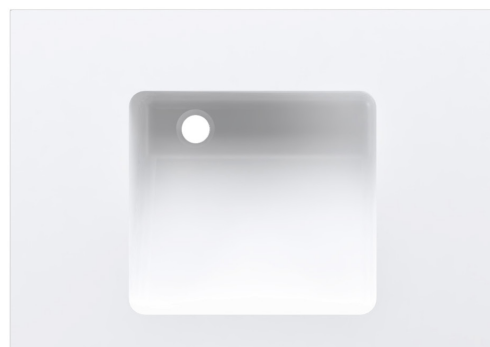
See full Corian® color options at futrus.com

OPTIONAL UPGRADES

Code	Description
BS	Backsplash*
CS	Coved backsplash
CD	Center drain**
TR	Tamper resistant/fully enclosed

Standard is no backsplash*

Standard is offset**



BASIN OPTIONS

Model	Description
1513	Angle X
F1814	Angle XL
F1510	Angle XS

CORIAN® SOLID SURFACE CERTIFICATIONS

All Corian® & Corian® Quartz materials are:

- GREENGUARD certified to resist the growth of viruses, bacteria & mold
- Class 1 (Class A) fire rated
- GREENGUARD Gold
- GREENGUARD Indoor Air Quality Certified
- Contributes to LEED certification credits



FUTRUS® ANGLE X SERIES SINK MODULE

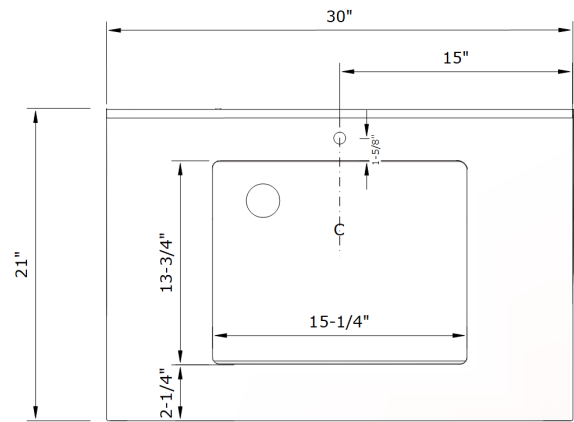
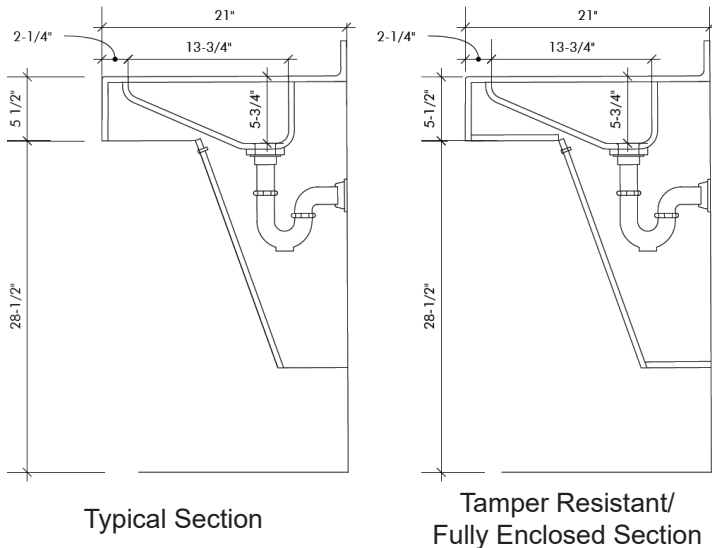
ANTI-SPLASHBACK ADA SINK WITH INTEGRATED PLUMBING ENCLOSURE MADE WITH 100% ACRYLIC SOLID SURFACE

FUTRUS®
SOLID SURFACE SOLUTIONS

MODEL FAXMOD

Specification Sheet

Division 22 Plumbing Manufacturers



Top View (AngleX Basin)

STANDARD SIZES

Dimensions (Inches)

Code	Width	Depth	Apron
FAXMOD	30"	21"	5-1/2"
CUSTOM			

TECHNICAL INFORMATION

- All dimensions are nominal
- Futrus® 1-year limited warranty
- Corian® 10-year material warranty

EXAMPLE MODEL SPECIFICATION

FAXMOD_F1513_GW_BS

(Model_Basin_Corian Color_Optional Extra)

RECOMMENDED SPECIFICATION- PLUMBING FIXTURES SECTION 22

The Futrus AngleX Sink Module, model FAXMOD. Basin, countertop, backsplash and sidesplash fabricated from seamless Corian® solid surface. Module designed with a Corian® tamperproof plumbing enclosure. All framing components shall be made of moisture resistant stainless steel. Standard lavatory height at 34" to conform with ANSI, UFAS and ADA standards. Division 22 Plumbing Fixtures.



futrus.com
info@futrus.com

Futrus LTD All Rights Reserved Copying or distribution of this design, in whole or in part, is strictly prohibited

1.877.388.FUTRUS1 [388.7871]

Futrus® is a registered trademark of Futrus LTD. Corian® is a trademark of affiliates of DuPont de Nemours, Inc. Dimensions are nominal for reference only.

Copyright © Futrus. All rights reserved.