

FUTRUS® ANGLE XS SINK

UNDERMOUNT ADA COMPLIANT ANTI-SPLASHBACK

SINKS MADE WITH 100% ACRYLIC SOLID SURFACE

FUTRUS
SOLID SURFACE SOLUTIONS

MODEL F1510

Specification Sheet

Division 22 Plumbing Manufacturers

FEATURES

- Made with 100% acrylic solid surface
- Anti-splashback slope
- Seamless & bleach cleanable
- Range of sizes & drain locations
- Resists mold, virus & bacteria growth
- Low maintenance
- Impact & chip resistant
- Optional overflow integration
- Repairable
- Easy installation
- No order minimums

STANDARD CORIAN® COLOR OPTIONS

Color*	Code	Description
	GW	Glacier White
	CW	Cameo White
	BI	Bisque
	BN	Bone
	VY	Silver Gray
	NL	Vanilla
	ALT	Alternate/Custom

Color tiles are for reference only*

See full Corian® color options at futrus.com

CERTIFICATIONS

All Corian® materials are:

- GREENGUARD certified to resist the growth of viruses, bacteria & mold
- Class 1 (Class A) fire rated
- GREENGUARD Gold
- GREENGUARD Indoor Air Quality Certified
- NSF/ANSI Standard 51 certified
- Contributes to LEED certification credits



FUTRUS® ANGLE XS SINK

UNDERMOUNT ADA COMPLIANT ANTI-SPLASHBACK

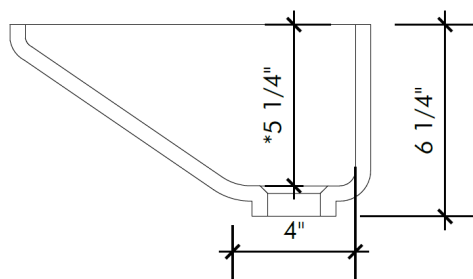
SINKS MADE WITH 100% ACRYLIC SOLID SURFACE

FUTRUS
SOLID SURFACE SOLUTIONS

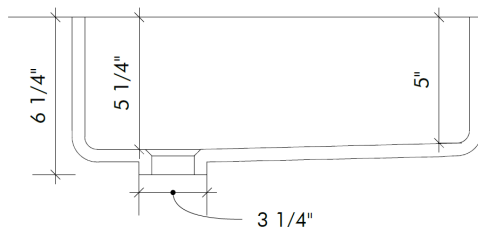
MODEL F1510

Specification Sheet

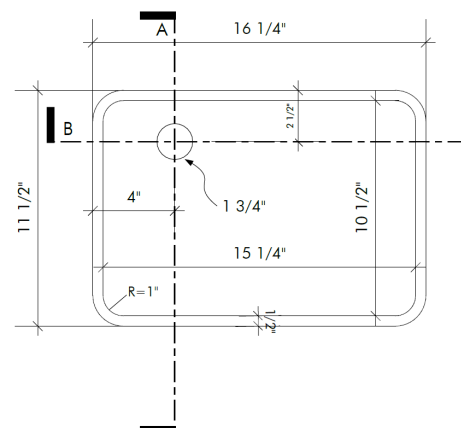
Division 22 Plumbing Manufacturers



Side Cross Section



Front Cross Section



Top View

STANDARD SIZES

Inside Bowl Dimensions (Inches)

Code	Width	Length	Depth
F1510	15 1/4"	10 3/4"	5 1/4"

TECHNICAL INFORMATION

- All dimensions are nominal
- Futrus® 1-year limited warranty
- Corian® 10-year material warranty

EXAMPLE MODEL SPECIFICATION

F1510_GW
(Model_Corion Color)

RECOMMENDED SPECIFICATION- PLUMBING FIXTURES SECTION 22

The Futrus Angle XS Sink, model F1510. Sink fabricated from seamless 100% solid surface. Conforms with ANSI, UFAS and ADA standards when installed according to recommendations. Division 22 Plumbing Fixtures.



futrus.com
info@futrus.com

1.877.388.FUTRUS1 [388.7871]