

FUTRUS® ELIPTA SINK MODULE

OVAL ADA SINK WITH INTEGRATED PLUMBING ENCLOSURE

MADE WITH 100% ACRYLIC SOLID SURFACE

FUTRUS
SOLID SURFACE SOLUTIONS

MODEL FEMOD

Specification Sheet

Division 22 Plumbing Manufacturers

FEATURES

- Made with 100% acrylic solid surface
- Seamless & bleach cleanable
- Anti-Splashback basin
- Range of sizes & drain locations
- Resists mold, virus & bacteria growth
- Low maintenance
- Stain, impact & chip resistant
- Optional overflow integration
- Repairable
- Available in all solid surface colors
- Moisture resistant laminate plumbing enclosure
- Easy installation
- No order minimums




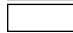
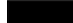
STANDARD CORIAN® COLOR OPTIONS

Color*	Code	Description
	GW	Glacier White
	CW	Cameo White
	BI	Bisque
	BN	Bone
	VY	Silver Gray
	NL	Vanilla
	ALT	Alternate/Custom

Color tiles are for reference only*

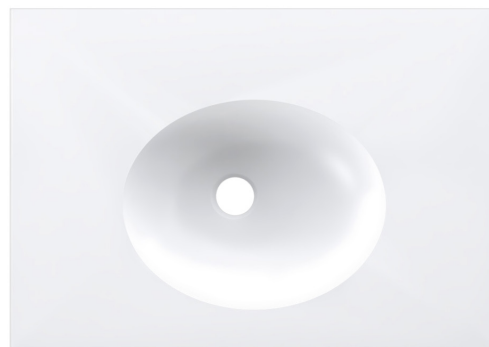
See full Corian® color options at futrus.com

STANDARD LAMINATE COLOR OPTIONS

Color*	Code	Description
	LW / TW	Laminate Walnut / Thermofoil Walnut
	LC / TC	Laminate Cherry / Thermofoil Cherry
	LM / TM	Laminate Maple / Thermofoil Maple
	LA1 / T1	Laminate White / Thermofoil White
	LA2 / T2	Laminate Black / Thermofoil Black

Color tiles are for reference only*

See full Corian® color choices at futrus.com



OPTIONAL UPGRADES

Code	Description
BS	Backsplash*
CS	Coved backsplash
CD	Center drain**
TR	Tamper resistant/fully enclosed

Standard is no backsplash*

Standard is offset**



futrus.com
info@futrus.com

1.877.388.FUTRUS1 [388.7871]

Futrus LTD All Rights Reserved Copying or distribution of this design, in whole or in part, is strictly prohibited

Futrus® is a registered trademark of Futrus LTD. Corian® is a trademark of affiliates of DuPont de Nemours, Inc. Dimensions are nominal for reference only.

Copyright © Futrus. All rights reserved.

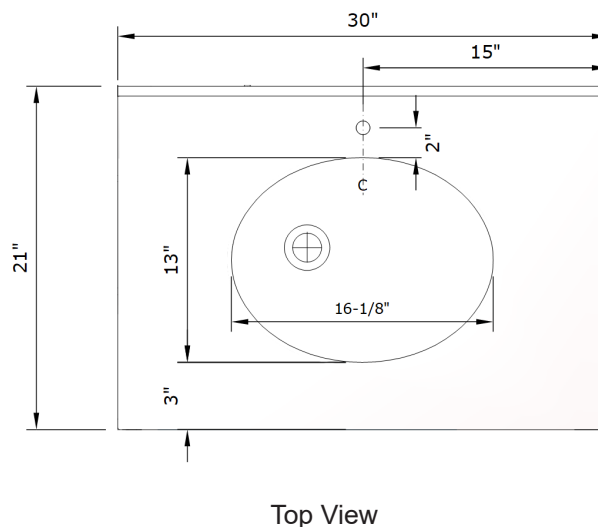
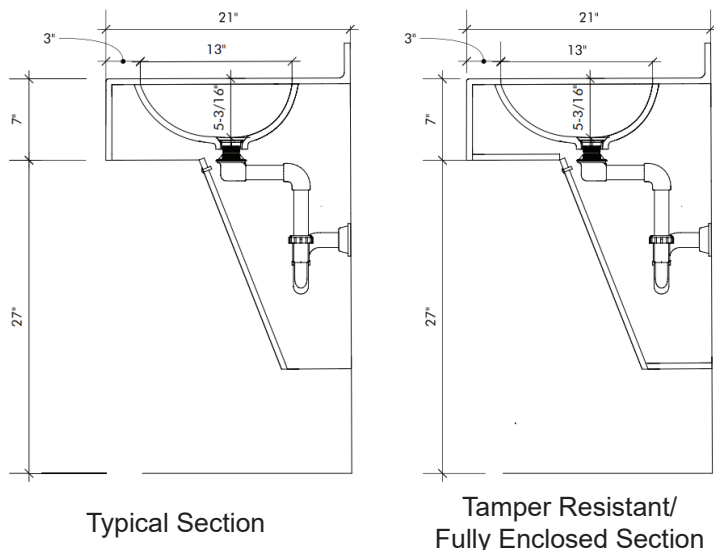
FUTRUS® ELIPTA SINK MODULE (HYBRID)

OVAL ADA SINK MADE WITH 100% ACRYLIC SOLID SURFACE WITH INTEGRATED LAMINATE PLUMBING ENCLOSURE

MODEL FHEMOD

Specification Sheet

Division 22 Plumbing Manufacturers



STANDARD SIZES

Dimensions (Inches)

Code	Width	Depth	Apron
FHEMOD	30"	21"	7"
CUSTOM			

CORIAN® SOLID SURFACE CERTIFICATIONS

All Corian® & Corian® Quartz materials are:

- GREENGUARD certified to resist the growth of viruses, bacteria & mold
- Class 1 (Class A) fire rated
- GREENGUARD Gold
- GREENGUARD Indoor Air Quality Certified
- Contributes to LEED certification credits

TECHNICAL INFORMATION

- All dimensions are nominal
- Futrus® 1-year limited warranty
- Corian® 10-year material warranty

RECOMMENDED SPECIFICATION- PLUMBING FIXTURES SECTION 22

The Futrus Hybrid Elipta Sink Module, model FHEMOD. Basin, countertop, backsplash and sidesplash fabricated from seamless Corian® solid surface. Module designed with a Corian® tamperproof plumbing enclosure. All framing components shall be made of moisture resistant stainless steel. Standard lavatory height at 34" to conform with ANSI, UFAS and ADA standards. Division 22 Plumbing Fixtures.

EXAMPLE MODEL SPECIFICATION

FEMOD_ GW_ LW_ BS

(Model_Corian Color_Laminate Color_Optional Extra)

