

FUTRUS® KURVO HYBRID SINK MODULE- DOUBLE CURVE

LIGATURE-RESISTANT ADA SOLID SURFACE SINK WITH INTEGRATED LAMINATE PLUMBING ENCLOSURE



MODEL FHKURVO_D

Specification Sheet

Division 22 Plumbing Manufacturers

FEATURES

- Solid surface sink
- Seamless & bleach cleanable
- Anti-ligature design
- Range of sizes & drain locations
- Resists mold, virus & bacteria growth
- Low maintenance
- Stain, impact & chip resistant
- Optional overflow integration
- Repairable
- Easy installation
- Available in all solid surface colors
- Moisture resistant laminate plumbing enclosure
- No order minimums



STANDARD CORIAN® COLOR OPTIONS

Color*	Code	Description
	GW	Glacier White
	CW	Cameo White
	BI	Bisque
	BN	Bone
	VY	Silver Gray
	NL	Vanilla
	ALT	Alternate/Custom

Color tiles are for reference only*

See full Corian® color options at futrus.com

STANDARD LAMINATE COLOR OPTIONS

Color*	Code	Description
	LW / TW	Laminate Walnut / Thermofoil Walnut
	LC / TC	Laminate Cherry / Thermofoil Cherry
	LM / TM	Laminate Maple / Thermofoil Maple
	LA1 / T1	Laminate White / Thermofoil White
	LA2 / T2	Laminate Black / Thermofoil Black

Color tiles are for reference only*

See full Corian® color choices at futrus.com

OPTIONAL UPGRADES

Code	Description
BS	Backsplash*
CS	Coved backsplash
TR	Tamper resistant/fully enclosed

Standard is no backsplash*

CORIAN® SOLID SURFACE CERTIFICATIONS

All Corian® & Corian® Quartz materials are:

- GREENGUARD certified to resist the growth of viruses, bacteria & mold
- Class 1 (Class A) fire rated
- GREENGUARD Gold
- GREENGUARD Indoor Air Quality Certified
- Contributes to LEED certification credits



FUTRUS® KURVO HYBRID SINK MODULE- DOUBLE CURVE

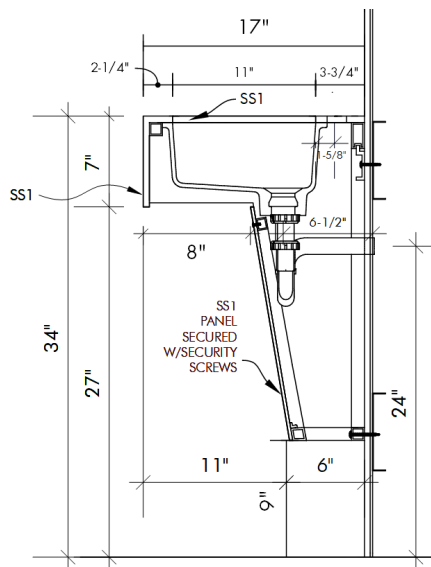
LIGATURE-RESISTANT ADA SOLID SURFACE SINK WITH INTEGRATED LAMINATE PLUMBING ENCLOSURE

FUTRUS
SOLID SURFACE SOLUTIONS

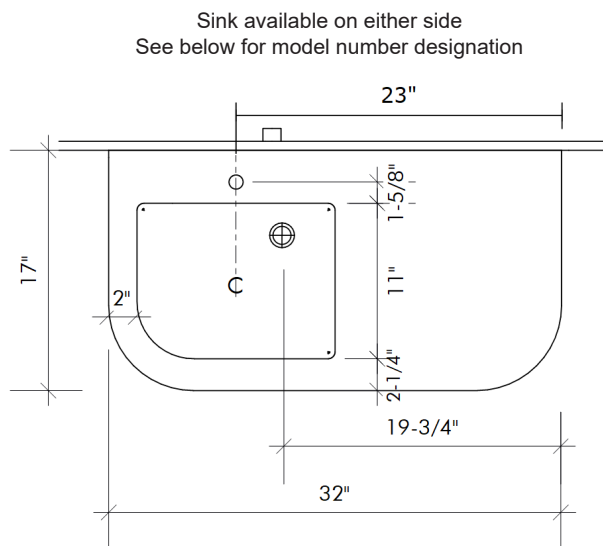
MODEL FHKURVO_D

Specification Sheet

Division 22 Plumbing Manufacturers



Side Cross Section



Top View

STANDARD SIZES

Dimensions (Inches)

Code	Width	Depth	Apron	Sink Location
FHKURVO_D-R	32"	17"	7"	RIGHT
FHKURVO_D-L	32"	17"	7"	LEFT
CUSTOM				

TECHNICAL INFORMATION

- All dimensions are nominal
- Futrus® 1-year limited warranty
- Corian® 10-year material warranty

EXAMPLE MODEL SPECIFICATION

FHKURVO_D-R_GW_LW_BS

(Model_Corian_Color_Laminate Color_Optional Extra)

RECOMMENDED SPECIFICATION- PLUMBING FIXTURES SECTION 22

The Futrus Kurvo Hybrid Sink Module- Double Curve Sink, model FHKURVO_D. Basin, countertop, backsplash and sidesplash fabricated from seamless solid surface. Module designed to be ligature-resistant with a laminate tamperproof plumbing enclosure. All framing components shall be made of moisture resistant stainless steel. Standard lavatory height at 34" to conform with ANSI, UFAS and ADA standards. Division 22 Plumbing Fixtures.



futrus.com
info@futrus.com

Futrus LTD All Rights Reserved Copying or distribution of this design, in whole or in part, is strictly prohibited

1.877.388.FUTRUS1 [388.7871]

Futrus® is a registered trademark of Futrus LTD. Corian® is a trademark of affiliates of DuPont de Nemours, Inc. Dimensions are nominal for reference only.

Copyright © Futrus. All rights reserved.