

FUTRUS® KURVO SINK MODULE- CURVED LEFT LIGATURE-RESISTANT ADA SOLID SURFACE SINK WITH INTEGRATED PLUMBING ENCLOSURE

FUTRUS
SOLID SURFACE SOLUTIONS

MODEL FKURVO_L

Specification Sheet

Division 22 Plumbing Manufacturers

FEATURES

- Solid surface sink
- Seamless & bleach cleanable
- Anti-ligature design
- Range of sizes & drain locations
- Resists mold, virus & bacteria growth
- Low maintenance
- Stain, impact & chip resistant
- Optional overflow integration
- Repairable
- Easy installation
- Available in all solid surface colors
- Solid surface plumbing enclosure
- No order minimums

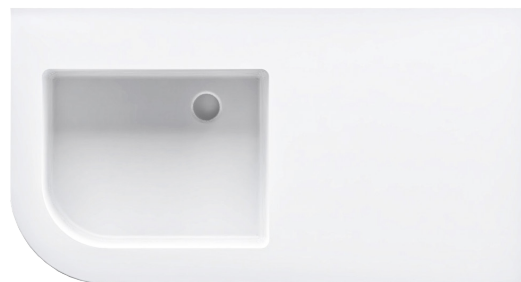


STANDARD CORIAN® COLOR OPTIONS

| Color* | Code | Description |
|--|------|------------------|
|  | GW | Glacier White |
|  | CW | Cameo White |
|  | BI | Bisque |
|  | BN | Bone |
|  | VY | Silver Gray |
|  | NL | Vanilla |
|  | ALT | Alternate/Custom |

Color tiles are for reference only*

See full Corian® color options at futrus.com



OPTIONAL UPGRADES

| Code | Description |
|------|---------------------------------|
| BS | Backsplash* |
| CS | Coved backsplash |
| TR | Tamper resistant/fully enclosed |

Standard is no backsplash*

CORIAN® SOLID SURFACE CERTIFICATIONS

All Corian® & Corian® Quartz materials are:

- GREENGUARD certified to resist the growth of viruses, bacteria & mold
- Class 1 (Class A) fire rated
- GREENGUARD Gold
- GREENGUARD Indoor Air Quality Certified
- Contributes to LEED certification credits



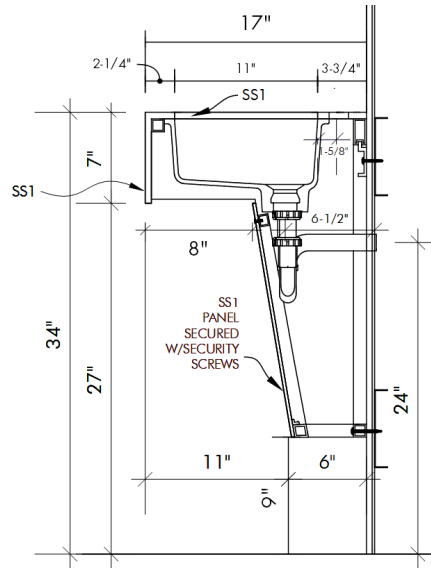
FUTRUS® KURVO SINK MODULE- CURVED LEFT LIGATURE-RESISTANT ADA SOLID SURFACE SINK WITH INTEGRATED PLUMBING ENCLOSURE



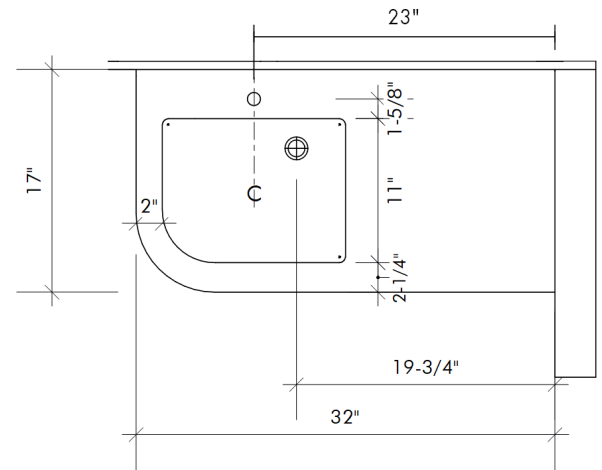
MODEL FKURVO_L

Specification Sheet

Division 22 Plumbing Manufacturers



Side Cross Section



Top View

STANDARD SIZES

Dimensions (Inches)

| Code | Width | Depth | Apron |
|----------|-------|-------|-------|
| FKURVO_L | 32" | 17" | 7" |
| CUSTOM | | | |

TECHNICAL INFORMATION

- All dimensions are nominal
- Futrus® 1-year limited warranty
- Corian® 10-year material warranty

EXAMPLE MODEL SPECIFICATION

FKURVO_L_GW_BS

(Model_Corion Color_Optional Extra)

RECOMMENDED SPECIFICATION- PLUMBING FIXTURES SECTION 22

The Futrus Kurvo Sink Module- Curved Left, model FKURVO_L. Basin, countertop, backsplash and sidesplash fabricated from seamless solid surface. Module designed to be ligature-resistant with a solid surface tamperproof plumbing enclosure. All framing components shall be made of moisture resistant stainless steel. Standard lavatory height at 34" to conform with ANSI, UFAS and ADA standards. Division 22 Plumbing Fixtures.

