

# FUTRUS® RADIUS FLEXX™ RECEPTION DESK

MODULAR, CURVED DESK WITH RADIUS EDGES MADE WITH SOLID SURFACE

## MODEL RFD

Specification Sheet  
Division 12 Furnishings

### FEATURES

- Made with Corian® solid surface
- Bleach cleanable
- Seamless & nonporous
- GREENGUARD® to resist mold, virus & bacteria growth
- Easy to clean
- Impact, scratch & chip resistant
- Modular left, right and center configurations.
- Available in a range of Corian® solid surface colors



### STANDARD CORIAN® COLOR OPTIONS

Color*	Code	Description
	GW	Glacier White
	CW	Cameo White
	BI	Bisque
	BN	Bone
	VY	Silver Gray
	NL	Vanilla
	ALT	Alternate/Custom

Color tiles are for reference only\*  
See full Corian® color options at [futrus.com](http://futrus.com)

### OPTIONAL UPGRADES

Code	Description
WC	Wireless charging
FG	Additional flip-top grommet*
PG	Power grommet*
KP	Keyboard pullout
WM	Wire Management

Standard desk comes with 1 flip-top grommet\*

### CERTIFICATIONS

- NSF/ANSI Standard 51 certified
- GREENGUARD certified to resist the growth of viruses, bacteria & mold
- GREENGUARD Gold low VOC emissions
- Contributes to LEED certification credits
- Class 1 (Class A) fire rated

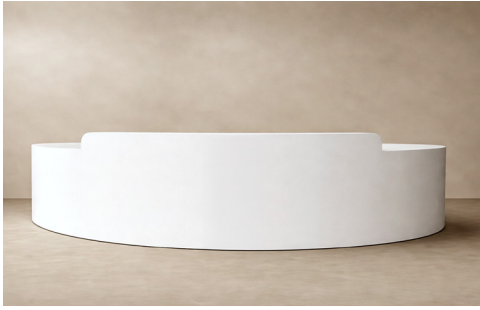
### RECOMMENDED SPECIFICATION

**To be specified in Division 12 Furnishings.** The Futrus Radius Flexx™ Desk, Model RD. Desk surfaces to be made of 100% acrylic solid surface with no polyester blends. Desk to be NSF/ANSI Standard 51 certified; GREENGUARD certified to resist the growth of viruses, bacteria & mold; GREENGUARD Gold low VOC emissions; Contribute to LEED certification credits; Class 1 (Class A) fire rated.

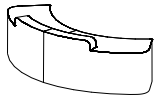


# FUTRUS® RADIUS FLEXX™ RECEPTION DESK MODULAR, CURVED DESK WITH RADIUS EDGES MADE WITH SOLID SURFACE

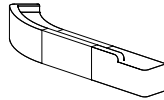
## STANDARD CONFIGURATIONS



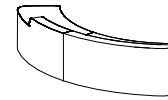
**RFLEXX01**  
177"W x 36"D x 30"/42"H  
RD08-LE + RD14R-36 + RD07-R



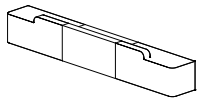
**RFLEXX02**  
318.5"W x 36"D x 30"/42"H  
RD08-LE + RD12-44 + RD03-R



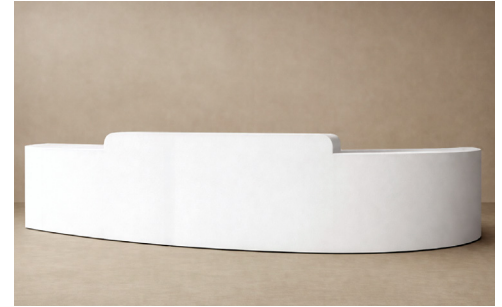
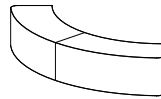
**RFLEXX03**  
176"W x 36"D x 30"/42"H  
RD03-L + RD12-48 + RD03-R



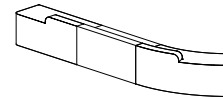
**RFLEXX04**  
316.5"W x 36"D x 30"/42"H  
RD02-L + RD12-36 + RD13L-32 + RD07-R



**RFLEXX05**  
219.5"W x 36"D x 30"H  
RD08-LE + RD13L-41 + RD15-48 + RD13-41 + RD08-RE



**RFLEXX06**  
297"W x 36"D x 30"/42"H  
RD08-LE + RD12-78 + RD08-RE



## TOE KICK OPTIONS



SEAMLESS [TOE]



FLUSH STAINLESS STEEL [TOE-SS]



INSET [TOE-INSET]



# FUTRUS® RADIUS FLEXX™ RECEPTION DESK

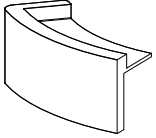
MODULAR, CURVED DESK WITH RADIUS EDGES MADE WITH SOLID SURFACE

## MODEL RFD

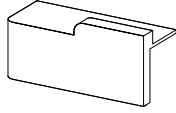
### Specification Sheet

### Division 12 FF&E

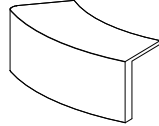
#### ENDS (Available in Left "L" or Right "R" configurations)



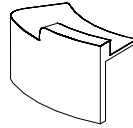
**RFD01**  
Capped Curved End  
109"W x 36"D x 30"/42"H



**RFD02**  
Straight Rounded End  
108"W x 36"D x 30"/42"H

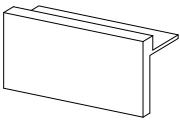


**RFD03**  
Curved End  
106"W x 34"D x 30"H

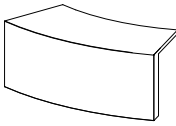


**RFD04**  
Curved Rounded End  
83"W x 36"D x 30"/42"H

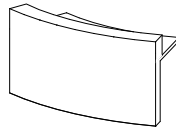
#### MIDSECTIONS (Available in sizes from 6" to 144")



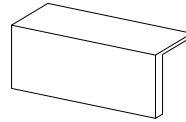
**RFD05-X**  
Raised Midsection  
"X"W x 36"D x 30"/42"H



**RFD06-X**  
Midsection  
"X"W x 36"D x 30"H



**RFD07-X**  
Raised Midsection  
"X"W x 36"D x 30"/42"H



**RFD08-X**  
Midsection  
"X"W x 36"D x 30"H

#### EXAMPLE MODEL SPECIFICATION (STANDARD CONFIGURATION)

### RFLEXX01\_GW\_PG

(Configuration ID\_Solid Surface Color\_Optional Upgrade)

#### EXAMPLE MODEL SPECIFICATION (CUSTOM CONFIGURATION)

### RFD01 + RFD07-36 + RFD03\_GW\_TOE-SS\_PG

(Left End + Midsection + Right End\_Solid Surface Color\_TOE\_Optional Upgrade)

