

FUTRUS CUBICA UNDER-MOUNT SINK

FUTRUS
SOLUTIONS WITH CORIAN® DESIGN

designed with

CORIAN
SOLID SURFACE

MODEL F1614

Specification Sheet

Division 22 Plumbing Manufacturers

FEATURES

- Made from 100% Corian® solid surface
- Easy-to-clean nonporous surface
- Corian® resists virus, bacteria & mold growth
- Bleach cleanable
- Resists scratching & staining
- Standard with no overflow
- Offset left drain position

STANDARD CORIAN® COLOR OPTIONS

Color*	Code	Description
	00	Glacier White
	01	Cameo White
	02	Bisque
	03	Bone
	04	Silver Gary
	05	Vanilla

*Color tiles are for reference only
[See full Corian® color choices](#)



CERTIFICATIONS

All Corian® & Corian® Quartz materials are:

- GREENGUARD certified to resist the growth of viruses, bacteria & mold
- Class 1 (Class A) fire rated
- GREENGUARD Gold
- GREENGUARD Indoor Air Quality Certified
- NSF/ANSI Standard 51 certified
- Contributes to LEED certification credits

FUTRUS CUBICA UNDER-MOUNT SINK

FUTRUS
SOLUTIONS WITH CORIAN® DESIGN

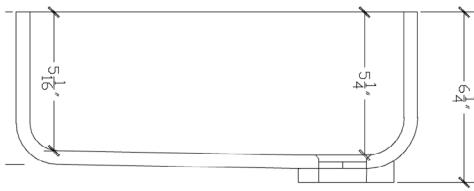
designed with

CORIAN
SOLID SURFACE

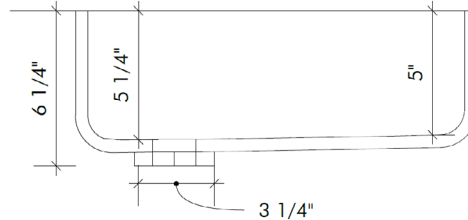
MODEL F1614

Specification Sheet

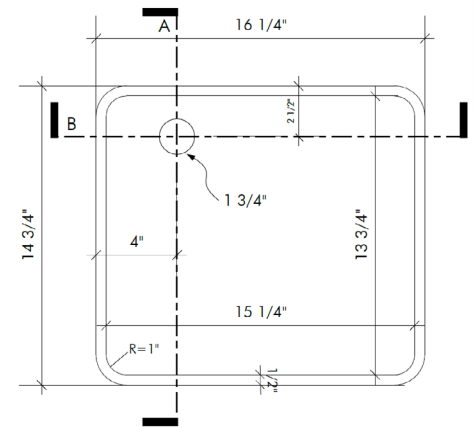
Division 22 Plumbing Manufacturers



Side Cross Section



Front Cross Section



Top View

STANDARD SIZES

Code

F1614

Dimensions

15 1/4" W 13 3/4" L*

*Inside bowl dimensions

TECHNICAL INFORMATION

- All dimensions are nominal
- Futrus® 1-year limited warranty
- Corian® 10-year material warranty

EXAMPLE MODEL SPECIFICATION

F1614_00
(Model_Corian Color)

RECOMMENDED SPECIFICATION- PLUMBING FIXTURES SECTION 22

The Futrus Cubica Sink, model F1614. Sink fabricated from seamless Corian®. Conforms with ANSI, UFAS and ADA standards when installed according to recommendations. Division 22 Plumbing Fixtures.